

---

## 开头语

---

衷心感谢您购买本公司产品！使用缝纫机之前，请认真阅读此说明书。本说明书介绍了缝纫机日常使用、维护与安全的有关注意事项。请您仔细加以保管，以便日后查阅。如产品规格或外观经过改良可能会与说明书略有不同，恕不另行通知。

---

## PROLOGUE

---

Thanking you for your purchase our products sincerely, please reading the manual book before operation, the book introduce some points how to operate, maintenance, and safe. Please keep it carefully for reading in the further; you will be not informed if the file has been revised. Please set sample as standard.

# 目 录

## CONTENTS

	页码
○致使用者 TO THE OPERATORS	1
○机器安装 HOW TO INSTALL THE NEW MACHINE	1
○润滑油的注入与更换 LUBRICATION AND DRAINAGE	2
○穿线方法 THREADING THE MACHINE	3
○控线调整 THREAD TENSION	3
○针距调整 STITCH LENGTH ADJUSTMENT	5
○换针方法 NEEDLE REPLACENENT	5
○差动比调整 DIFFERENTIAL FEED RATION ADJUSTMENT	6
○各缝纫元件的相互关系 PARTS RELATION AND TIMING	6
○故障排除 PROBLEM SETTLEMENT	9
○各部件零件 ALL RARTS OF THE COMPONENTS	13-50
○专用件 SPECIAL PIECE	51



## 为了安全

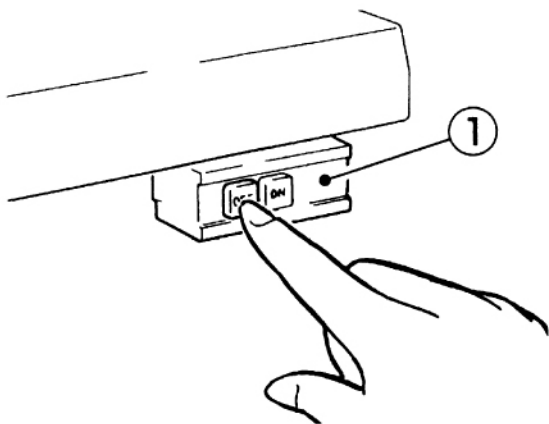
对于缝纫机本身各种装置，我们充分考虑到它的安全性。请遵照基本的操作方法，安全的进行工作。

- 拆除为保证安全所设置的装置，零件的情况下使用，是非常危险的，请绝对不要拆除后使用。
- 缝纫机在使用时，请不要在缝纫机台板上放置工具及缝纫时不必要的物品。
- 在对缝纫机进行检修、调节、清扫、穿线、换针等工作时，为防止发生事故，务必请切断电源，在确认即使踩下缝纫机踏板，缝纫机也不转动之后，再进行操作。

### 注意

使用离合式马达的情况下，在关掉电源①后因惯性作用会继续旋转。这时如不注意踩动缝纫机踏板②时，缝纫机会突然动作，这是很危险的。

请在关掉电源后，仍继续踩动踏板②，直至缝纫机完全停下来为止。



- 在离开缝纫机台时，务必请关掉电源。
- 停电时也请务必关掉电源。
- 为了总是安全地，运转良好的使用缝纫机，日常的点检是不可缺少的，请予以注意。



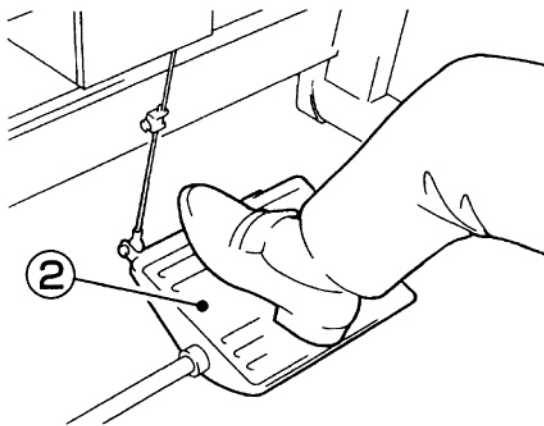
## OBSERVE THESE SAFETY PRECAUTIONS

Though Our takes the utmost care to produce safe sewing machines and devices, operators should follow these basic safety rules.

- To prevent accidents, do not remove safety devices or parts while operating the machine.
- Do not leave tools or other unnecessary objects on the machine table while operating the machine.
- Before maintenance, adjusting, cleaning, threading or replacing the needle, and to prevent accidents, be sure the power is turned off. Check that the machine will not operate when the pedal is pressed.

### Note

In case a clutch type motor is used, it will keep on rotating by inertia after turning off power supply. ① If the machine pedal ② is stepped on inadvertently, it is dangerous because the machine will move unexpectedly. Keep on stepping on the pedal ② until the machine comes to a stop after turning off power supply.



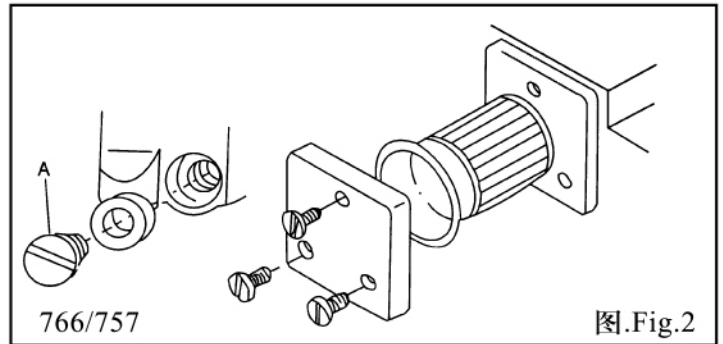
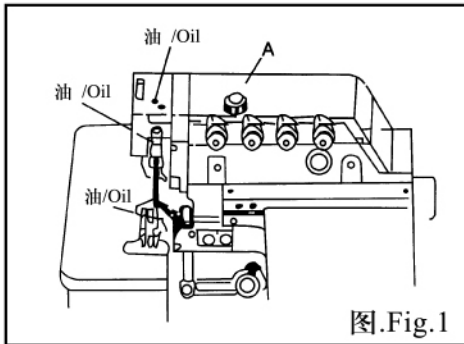
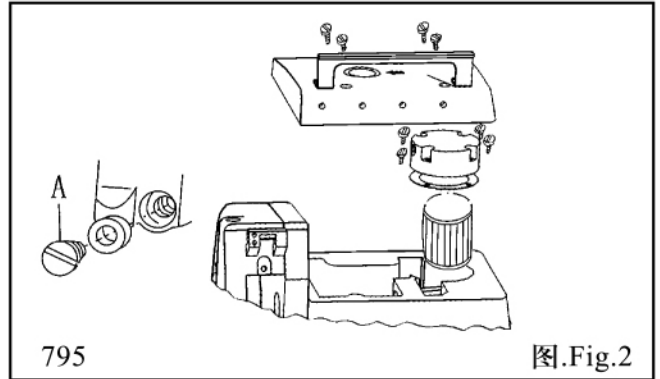
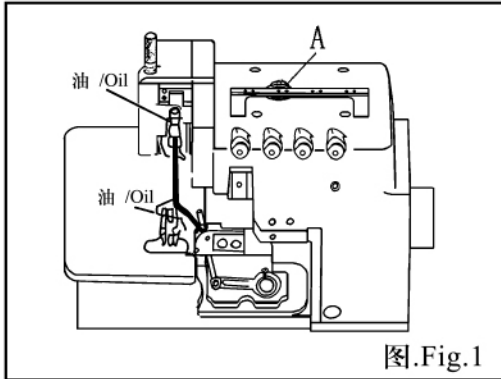
- Turn the power off before leaving the machine table.
- In the event of a power failure, be sure to turn the machine off.
- Check that the machine is securely grounded.

## 壹、致使用者：图1.2

首先请您注意：请先注入润滑油及确认马达的转向为顺时针方向，才可以开动本机器。

### TO THE OPERATORS

ATTENTION: Because this is an super high speed machine. DO not run it before filling. Oil and/making sure the correct turning direction of motor.



## 贰、机器安装：

- (1) 依本机所附桌板裁制图及零件组合图所列的配件，依序安装防震机座铝板半沉式时，机台针板面与桌板面的距离为100mm，全沉式为5mm。
- (2) 马达启运踏板装左边，抬压脚踏板则装于右边。
- (3) 按零件图示装置废料槽及线架
- (4) 注意马达的转向为顺时针方向，皮带的松紧度以用手指向内压下缩100mm为宜，皮带轮与缝台转速请参照表(1)。但常用转速就放为第一档为宜。

### HOW TO INSTALL THE MACHINE

- (1) Install the machine according to the table cut-out diagram, Cushion Rubber and Rest Board as enclosed. In case of semi-submerged, the distance between Needle plate top surface and Table Top is about 100mm, and for fully-submerged is about 5mm.
- (2) Setting the pedal of clutch motor to the left side and the pedal of presser foot lift at right ride.
- (3) Install the cloth waste chute, thread stand as parts list.
- (4) Be sure the motor turning direction is clockwise. And the belt can be pressed inware about 10mm.

NOTE: The dimensions of motor pulley and sewing speed are show in Table 1.

Tab.1

Machine speed (S.P.M)	Motor pulley diameter (mm)	
	60Hz	50Hz
5500	90	110
6000	95	115

## 新机器的启用规定

新机器在最初启用四个星期内，请用低于最高速度20%的速度运转，然后换新的润滑油既可运转到最高速度。

## HOW TO OPERATE THE NEW MACHINE

Please run the new machine in the first four at 20% less speed than maximum. Then replace the new oil and thereafter the machine may be operated up to maximum speed.

## 叁、润滑油的注入与更换

### (1) 润滑油的注入 图1

- 将螺丝A旋开，以包装箱内所附的超高速润滑油或选用MOBIL#10或AGIP等相当的机油加入，使油面处于油标两刻度线之间为好，然后再锁紧螺丝A。
- 开箱新机器或久置未使用重新要用时，请在针棒，上勾针台等加油润滑。

### (2) 润滑油的更换 图2

- 将螺丝A放松旋开，使油完全排出后再锁紧。
- 为延长本机器的寿命，请于开始使用四个星期更换新油后约四个月更换一次。
- 本机器特别装有滤油器，约每使用一个月后卸下清洗，必要时更换新品。

### (3) 针的冷却油

- 使用油：硅油 (SILICON OIL)

## LUBRICATION AND DRAINAGE

### (1) Lubrication Fig.1

·Remove Screw A and fill in enclosed ultra high speed lubricate oil (or similar to Mobil# 10,Esso#32) until the oil surface between two lines of oil Level Sight Window , Then replace Screw A.

·When the machine is operated for the first time it was idle for a long time ,please be sure to oil the top of the needle holder , guide , upper looper guide etc. before operating the machine.

### (2) Drainage Fig.2

·Remove Screw A and drain out the oil then replace Screw A.

·For keeping the good lubrication and machine life. please replace the new oil when the new machine has been operating over four weeks, And after that , change oil every four months.

·This machine has been fixed with oil filler .please clean it every month or replace a new one if necessary .

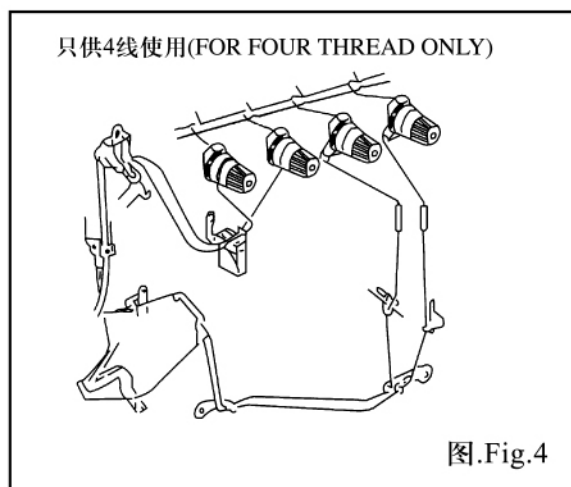
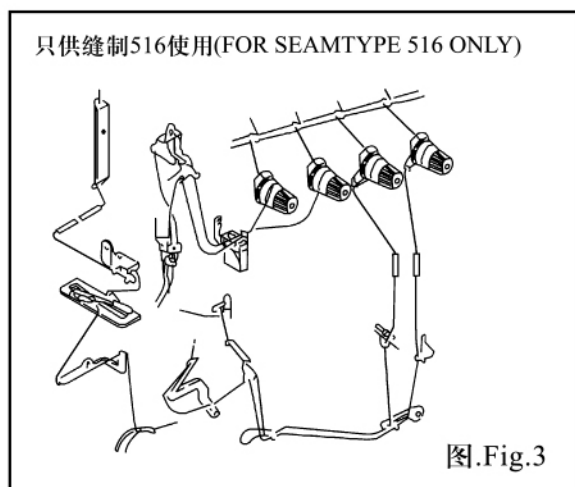
### (3) Needle Cooling Lubrication-Silicon oil.

## 肆、穿线方法 图3.4

请确实按照图示各种不同缝合形式穿线，错误的穿线将引起断线，跳针或车缝不平坦等现象。

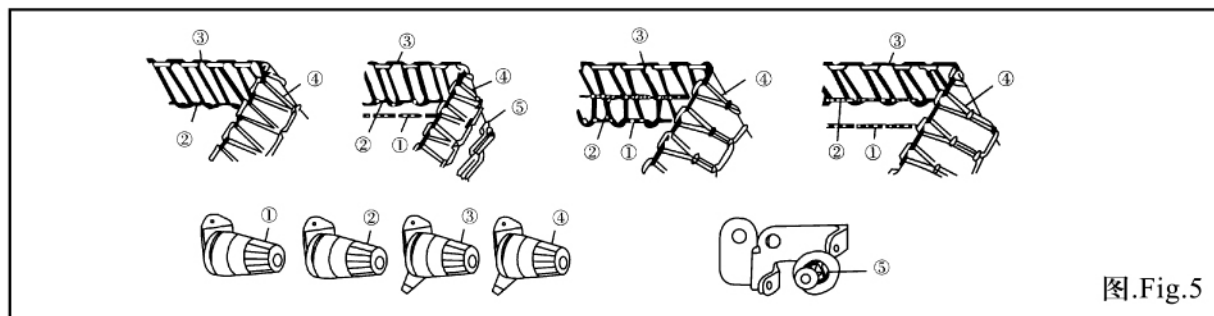
### THREADING THE MACHINE FIG3.4

Refer to the sewing type you need for correct threading. Any incorrect threading may cause thread break, uneven stitches or skip stitches etc.



## 伍、控线调整

控线强弱必须根据缝合材料种类，厚薄，线，针距及包边宽度等的不同而做不同的调整。

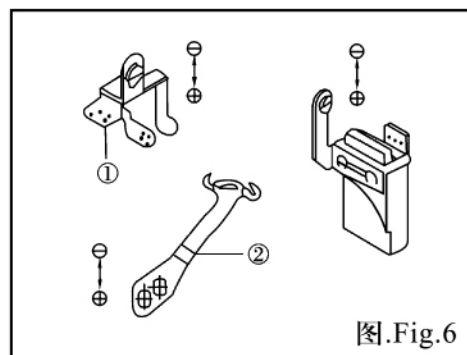


### (1) 调整钮的控线关系 图5

- 第一调整钮控制双环针线或左边拷克针线。
- 第二调整钮控制包边针线
- 第三调整钮控制上勾针线
- 第四调整钮控制下勾针线
- 第五调整钮控制双环勾针线

### (2) 针线控线关系 图6

- 在缝合方式504, 512, 514时，将①②移至最下端，
- 缝合方式503及505时，将①②移至最上端。



· (+)表示增加针线强度, (-)表示减少针线强度。

### (3) 勾线控制关系 图7

· 在缝合方式为512, 504当上勾针移至最左时, 将①及②调整至实线位置。若缝合方式为503, 505, 514及上勾针移至最左时, 将①及②调整至虚线位置。

· 估定线导板③如下:

A点: 尼龙伸缩线

B点: 拷下摆

C点: 缝合方式512

· 固定线导板④如下:

D点: 尼龙伸缩线

E点: 拷下摆

⊕方向为缝合线较多,  
反之较少。

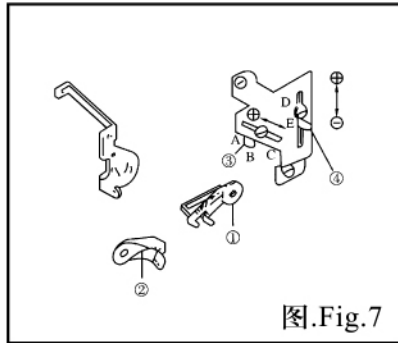


图.Fig.7

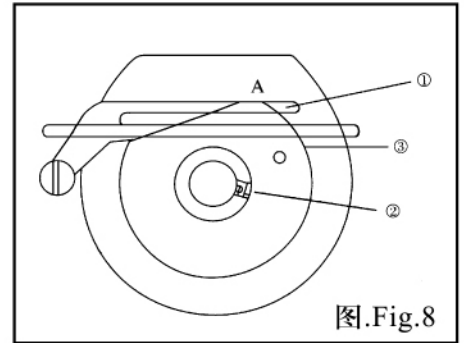


图.Fig.8

### (4) 环缝线凸轮控线关系 图8

正确的环线凸轮位置是当针提升至最高点时, A点恰好在勾针线导板①的表面, 放松凸轮螺钉②轮动凸轮③向逆时针方向则勾针收线较快。

## THREAD TENSION

The thread tension be adjusted according to sewing fabric, thickness, sewing thread, seam width stitch length etc. Therefore the pressure of the Tension Nuts or Thread Guides must be adjusted in each individual case.

### (1) Tension Nut Adjustment.Fig.5

- The tension Nut ① controls the double chain needle thread or left side overlock needle thread.
- The Tension Nut ⑤ controls the double chain looper thread.
- The Tension Nut ② controls the overlock needle thread.
- The Tension Nut ③ controls the upper looper thread.
- The Tension Nut ④ controls the lower looper thread.

### (2) Needle thread control.Fig.6

·In case of sewing type 504, 512, &514, push thread guide ① and ② to lowest point. and up to highest point of sewing type 503,505.

Note: the ⊕ direction is for more needle thread tension, otherwise it is for less needle thread tension.

### (3) Looper thread control.Fig.7

·For sewing type 512, when upper looper is extremely left, push take-up ① and ② at the position as the chain line.

·In case of sewing type 503 and 505, when upper looper moves to lowest, set take-up ① and ② at the position as the continuous line.

·Adjust thread guide ③ as follows:

- a) Point A for stretchy thread is used.
- b) Point B for seaming and blind stitch hemming.
- c) Point C for seaming type 512.

·Adjust thread guide ④ as follow,

- d) Point D for stretchy thread is used.
- e) Point E for seaming and blind stitch hemming.

Note: The direction is for more thread in sewing seam, and the direction is for less thread in sewing seam.

#### (4) Chain looper thread cam control.Fig.7

When the needle moves to its highest position, the right corner of the thread cam ③ matches with the upper surface of thread guide bracket ①.

Screw ② and adjust the thread cam ③ as clockwise is late for timing of looper thread cam.

## 陆、针距调整 图9 表2

通常按缝合布料，差动比等之不同而调整

·持续压下按钮并转动皮带轮使钮卡住，再转动皮带轮至所需的针距后放开此按钮。

### STITCH LENGTH ADJUSTMENT FIG.9TAB2

The stitch length adjustment is made according to the sewing fabric , differential feed ratio etc.

- Keep pushing the Push Botton enter deep inside .
- Keep pressing the Push Botton and match the desired stitch length which is show on the pulley with the indicating point of Belt Cover.

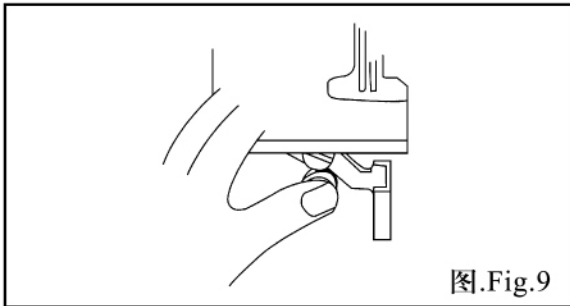


图.Fig.9

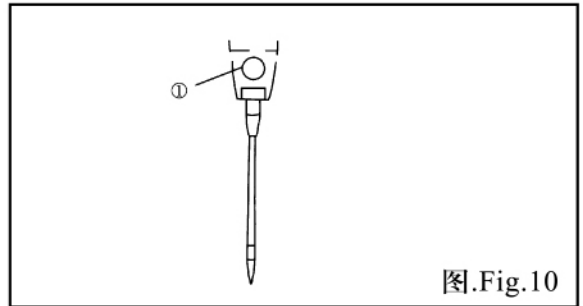


图.Fig.10

Tab.2

最大辨差率 Maxi diff ratio	机型 Machine type	带轮到度 Pulley scale						
		1	2	3	4	5	6	7
1:2	Seaming	1	1.5	2	2.5	3	3.5	3.8
1:3	Shirring	0.7	1	1.4	1.7	2	2.3	2.5
1:1.3	Serging	1.6	2.3	3.1	3.9	4.7	5.4	5.9
1:4	Special	0.6	0.9	1.2	1.5	1.8	2.1	1

## 柒、换针 图10

- 使用DC x 27或同规格的针
- 旋开螺丝①并取下针
- 将新针插至针孔最底端，并使针的长沟面向自己。
- 固定螺丝①。



# NEEDLE REPLACEMENT FIG.10

- Please use DC × 27 or equivalent needle size.
- Loosen Screw ① and remove the old needle .
- Insert the needle which long groove faces you and push it up deep into the needle hole until it stops and tighten Screw ① .

## 捌、差动比调整（主送料具与分送料具运动程比）图11表3

若主送料具的运动程大于分送料具运动程时，则布料车缝时伸张，反之则收缩。调整方法为放松螺丝①转动螺丝②顺时针方向时使布料伸张，反之则收缩，调整后再固定螺丝①。

注：当调整杆③的表面固定在刻划2时差动比为1: 1，若将其固定在刻划2以上时，可使布料伸张至1:0.7。

## DIFFERENTIAL FEED RATIO ADJUSTMENT(FIG.11TAB.3)

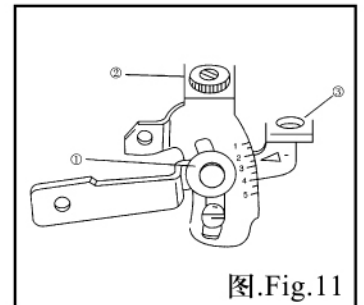
The differential feed ratio is the ratio of movements between Main Feed Dog and Differential Feed Dog , when the movement of Main Feed Dog is bigger than Differential Feed Dog , the fabric be stretched in sewing Otherwise the fabric be shrunked.

- Loosen Nut ① then turn Screw ② in clockwise for stretching the fabric. and in reverse direction for shrinking the fabric then tighten Nut ① .

NOTE: When the surface of adjusting Level ③ be set at the scale ② the differential feed ratio is 1:1, and if it be set over the scale its ratio can be adjustable up to 1:0.7 .

Tab.3

刻度 Scale		1	2	3	4	5
差动进料比率 Differential Feed ratio	1:3	---	1:0.7	1:0.9	1:1.1	1:1.3
	1:2	1:0.7	1:1	1:1.4	1:1.7	1:2
	1:3	1:1	1:1.5	1:2	1:2.5	1:3
	1:4	1:1.1	1:1.6	1:2.3	1:2.8	1:3.3

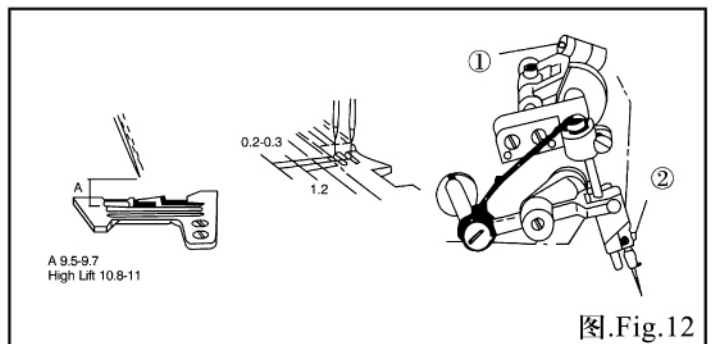


## 玖、各缝纫元件的相互关系

### (1) 针与针板的关系 图12

·当针上升至最高时，针尖端（双针时以左针为准）于针板面距离，标准程机器为9.5-9.7mm（但高程机器为10.8-11.0mm）。双针时右针必须略比左针向前0.2 - 0.3mm，但右针与板沟前端距离1.2mm。

·放松针动连杆螺丝①使之能以手推动针座滑块。转动皮带轮使针插在针孔槽中央，必要时放松螺丝②以调



整针座。转动皮带轮使针到最高点后，轻敲针座滑块至正确针高度后锁紧螺丝。

**(2) 上勾针与针的关系 图13**

·当上勾针移至最左时，勾针尖端与针中心线约4.5-5.0mm，双针时其左边针中心线与勾针尖端约距5.5-6.0mm。

**(3) 下勾针与针的关系 图14 图15**

·当下勾针移至最左时，勾针尖端与针中心线（双针时以左针为准）的距离A标准程机构:3.2-3.4mm 高程机器: 3.0-3.2mm

·当下勾针移到针中心线（双针时以左针为主）时，针与勾针的间隙为0-0.5mm。

**(4) 上勾针与下勾针的关系 图16**

·当上、下勾针相交时，两勾针尽可能接近，但不可摩擦相撞，其间隙A点为0.5mm及B点为0.2mm。

**(5) 针与导针片的关系 图16**

·当下勾针尖刚好到针（双针时以左针为准）中心线时，针与后导针片A的间隙为0mm。

·当针移到了低位置，针与前导针板B的间隙为0.1-0.2mm。

**(6) 环缝勾针与针的关系 图16**

·当环缝勾针移至最左时勾针尖端与针中心线的距离为2.5mm。

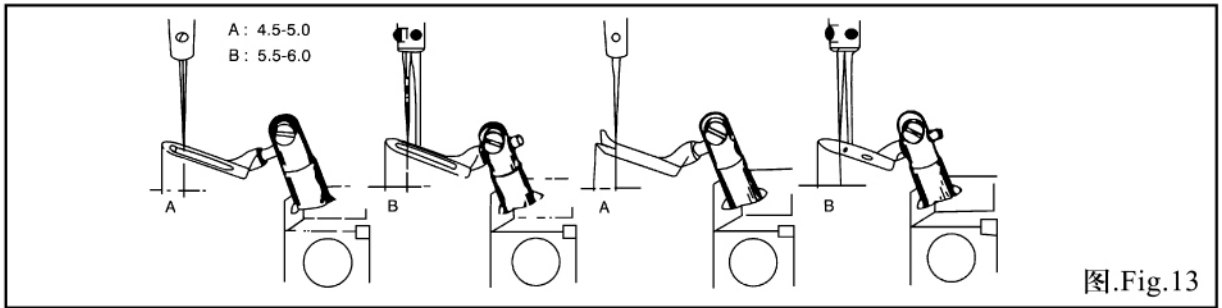


图.Fig.13

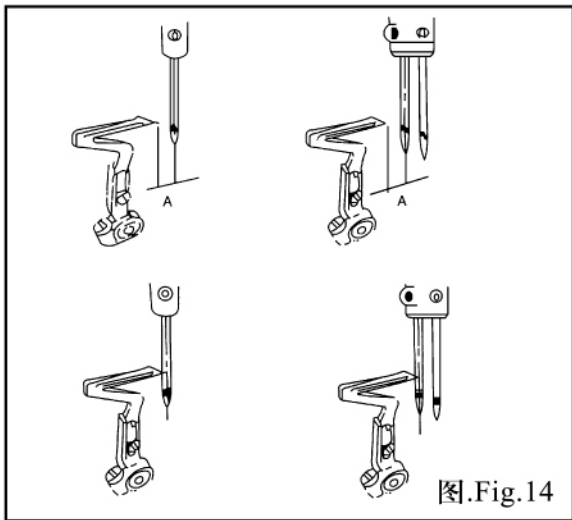


图.Fig.14

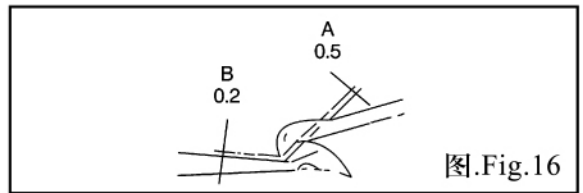


图.Fig.16

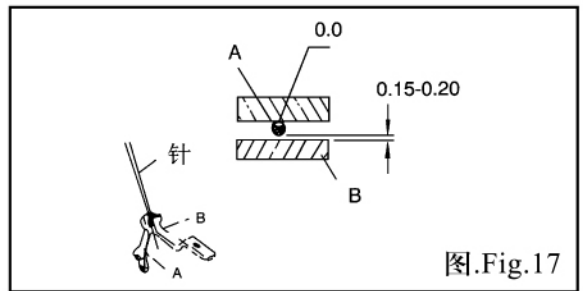


图.Fig.17

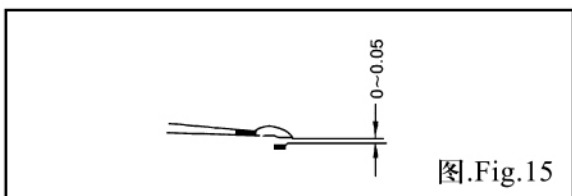


图.Fig.15

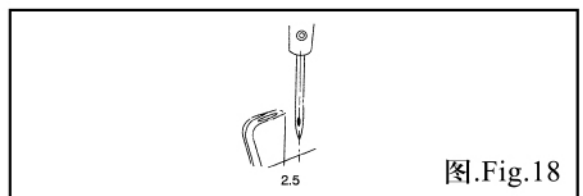


图.Fig.18

## **PARTS RELATION AND TIMING**

---

### **(1) Needle and Needle Plate Fig.12**

When the Needle moves to the highest position, the distance between needle point (left needle if two needle) and Needle Plate is 9.5-9.7mm for standard lift machine or 10.8-11.0mm for high lift machine. Each needle must center in each needle slot of Needle plate. The right needle must be ahead about 0.2-0.3mm than left needle. And the distance between the needle point (right needle if two needle).

To needle slot of Needle Plate or Presser Foot is 1.2mm.

- Slightly loosen Screw ① of Needle Drive Crank.
- Rotate the Pulley to check if needle center in each needle slot of Needle Plate. or you may loosen Screw ② and adjust Needle Holder .
- Rotate the Pulley for removing the needle to the highest position , tap the Needle Holder Guide until the correct needle height is obtained .
- Tighten Screw ① .

### **(2) Upper Looper (Spreader) and Needle Fig.13**

·When the Upper (spreader) moves to the extremely left, the distance between the point of looper (spreader) and center line of needle is 4.5-5.0, for 1 needle (spreader) to center line of left needle is 5.5-6.0mm for 2 needle machine.

### **(3) Lower Looper and Needle Fig.14.15**

·When the Lower Looper moves to the extremely left, the distance between looper point and center line of needle (left needle if 2 needle) is 3.4-3.6mm for high lift machine.

·When the Lower Looper moves to the center line of needle (left needle if 2 needle), the gap between needle and looper is 0-0.05mm.

### **(4) Upper Looper and Lower Lopper Fig.16**

When the Upper and Lower Lopper is crossed.

### **(5) Needle and Needle Guard Fig.17**

When the Lower Looper point is opposite the center line of Needle (left needle if 2 needle) , the gap between Needle and rear Needle Guard A is 0mm. when Needle moves to the lowest position, the gap between Needle and front Needle Guard B is 0.15-0.2mm.

### **(6) Chain Looper and Needle Fig.18**

The Chain Looper must be fixed into the lowest position of its holder and when the Chain Looper moves to the extremely left, the distance between the looper point and center line of needle is 2.5mm.

## 拾、故障排除

### 断 针

序号	原因:	对策:
1	针安装错误	重新装针, 长勾面向您自己
2	针尺寸不合	选用合适布料和缝线的机针
3	针已变弯	更换新针
4	针与顶针片的关系错误	调整顶针片与针的关系
5	针与勾针的关系错误	调整勾针与针的关系
6	针未插入针板沟或压脚沟中央	重新装针板或针, 或调整压脚

### NEEDLE BREAK

NO.	REASON	CORRECT
1	Needle installed wrong	Reset needle correctly
2	Wrong needle size	Use properly needle for fabric and thread
3	Needle is bended	Replace new needle
4	Wrong relation with Needle Guards	Readjust Needle Guard
5	Wrong relation with looper	Readjust looper
6	Needle does not center the needle slot of needle Plate or Presser Foot	Readjust the needle plate and presser point

### 断 线

序号	原因:	对策:
1	线品质不良	改用品质好的经
2	线粗细不均或比针孔大	换适宜的针与线
3	穿线错误	重新正确穿线
4	控线压力太强	调整控线强度
5	针安装错误	重新正确装针
6	线架过线错误	重新装线架使线能通过自如
7	针温度过高: (1) 针冷却槽已无冷却油 (2) 针导板装错	(1) 加冷却油 (2) 调整针导片
8	控线片已粗糙	用砂布拉滑后抛光
9	针与勾针的关系错误	调整针与勾针的关系
10	针、勾针、针板、针导板擦伤起毛头	磨去毛头或换新品

## THREAD BREAK

NO.	REASON	CORRECT
1	Inferior quality of thread	Use good quality thread
2	Thread is thicker than Needle hole	Use proper Needle for fabric and thread
3	Wrong threading	Rethreading correctly
4	Thread tension is too strong	Readjust thread tension nut
5	Needle installed wrong	Reset needle correctly
6	Thread Stand installed wrong	Reset thread stand for threading smoothly
7	Over heat of Needle: (1).NO silicon oil (2)Wrong setting of Needle Guard	(1)fill in Silicone oil (2) Readjust Needle Guard
8	Thread Disc or Guide is burred	Grind off polish or replace new one
9	Wrong relation of Needle and Looper	Readjust Needle and Looper
10	Needle, Looper, Needle Plate and Guide is burred	Grind off , polish or replace new one

## 跳针

序号	原因:	对策:
1	针与勾针的关系错误	调整针与勾针的关系
2	穿线错误	重新正确穿线
3	针安装错误	重新正确装针
4	控线压力太强或太弱	调整控线的强度
5	勾针类端损坏起毛头	去除毛头或换新品
6	针变弯	换新品
7	顶针片安装错误	重新正确安装顶针片

## SKIP STITCHES

NO.	REASON	CORRECT
1	Wrong relation of Needle and Looper	Readjust Needle and Looper
2	Wrong threading	Rethreading correctly
3	Needle installed wrong	Reset Needle correctly
4	Inadequate thread tension or tension too strong	Readjust Thread Tension Nut
5	Looper point is damaged	Replace new one
6	Needle is bended	Replace new one
7	Wrong installed Needle Guard	Readjust Needle Guard

## 松缝合

序号	原因:	对策:
1	穿线错误	重新正确穿线
2	线太粗	换适当尺寸的针
3	控线圈未压到线	调整控线圈适当压着线
4	针线已无硅油	添加硅油
5	针与勾针装错	重新正确安装

## LOOSEN STITCHES

NO.	REASON	CORRECT
1	Wrong threading	Rethreading correctly
2	Thread is thicker than Needle hole	Use proper Needle
3	Tension Disc do not press thread properly	Reset Tension Disc Properly
4	Needle thread is not lubricated	Fill silicon oil
5	Wrong setting of Needle and Loopers	Readjust Needle and Loopers

## 缝合不均

序号	原因:	对策:
1	穿线错误	重新正确穿线
2	线架安装错误	重新装线架使线能通过自如
3	下刀安装错误	重新安装下刀
4	刀未能剪布整齐 (1) 刀装错 (2) 刀钝	(1) 调整刀正确位置 (2) 重新正确安装
5	过线孔擦伤	重新打光
6	针尖受损	换新针
7	送料具高度不适宜	调整正确高度
8	押具压力太强或太弱	调整押具压力强度

## UNEVEN STITCHES

NO.	REASON	CORRECT
1	Wrong threading	Rethreading correctly
2	Thread Stand installed wrong	Reset Thread for threading smoothly
3	Lower Knife installed wrong	Readjust Lower Knife
4	Knives do not trim neatly (1)Knives installed wrong; (2) Dull lower Knife	Correct as follow (1)Readjust Knives; (2)Sharpen or replace new Knives
5	Thread Disc or Guide is burred	Grind off ,polish or replace new one
6	Needle Point is damaged	Replace new Needle
7	Inadequate heigh of Feed Dogs	Readjust Feed Dogs.
8	Inadequate thread tension	Readjust Thread Tension Nut

## 缝合起皱纹

序号	原因:	对策:
1	控线压力太强	重新调整控线强度
2	押具压力太强或太弱	调整押具压力强度
3	送料具太突出针板	调整送料具正确高度
4	刀无法快切	磨利刀片或换新品
5	差动送料未配合	调整适当差动送料
6	针太粗	用适宜布和线的针
7	包边宽度比针板舌狭窄	调整包边宽度或换针板舌

## WRINKLED STITCHES

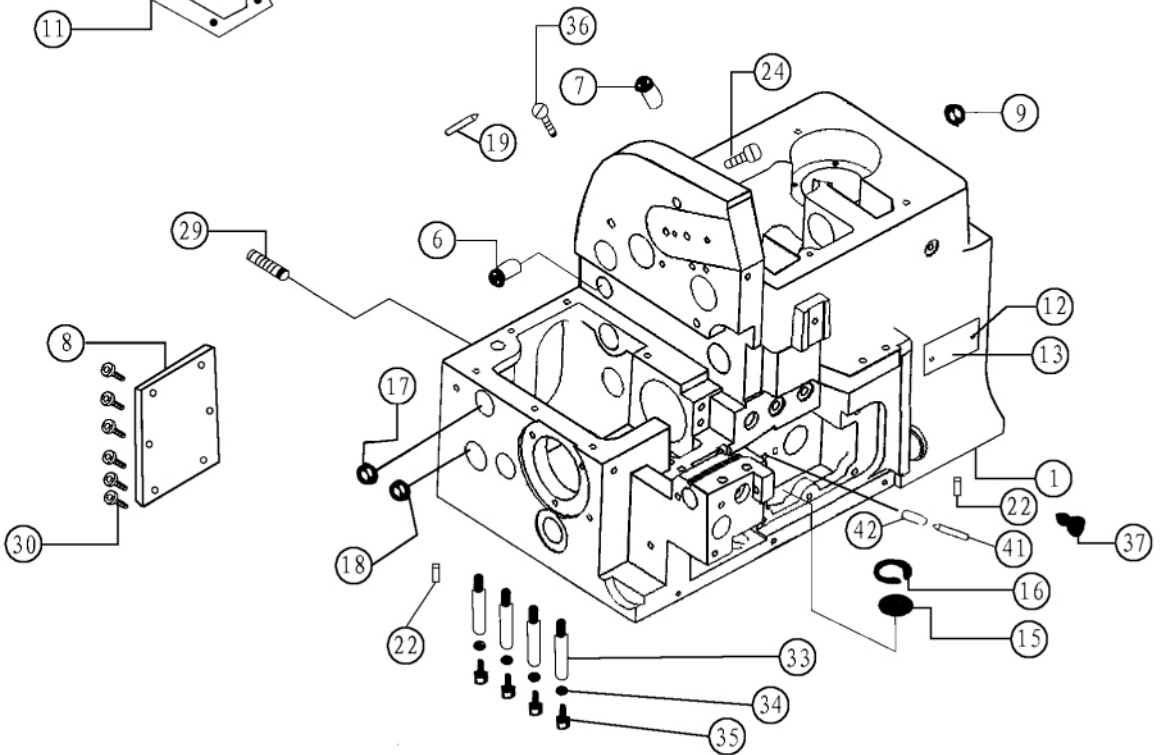
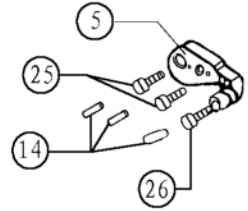
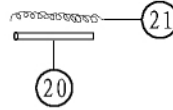
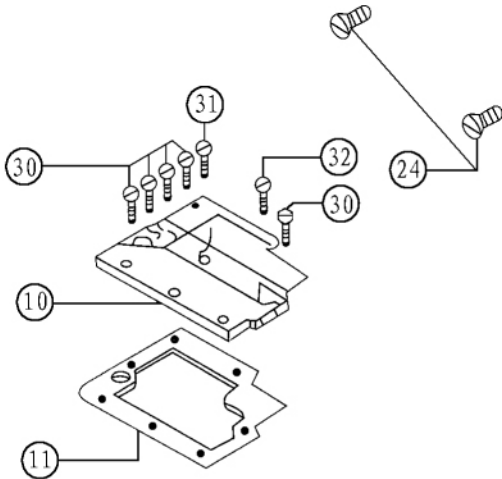
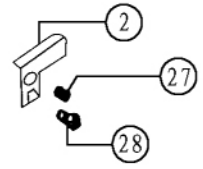
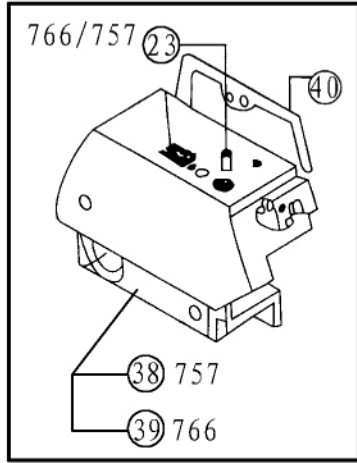
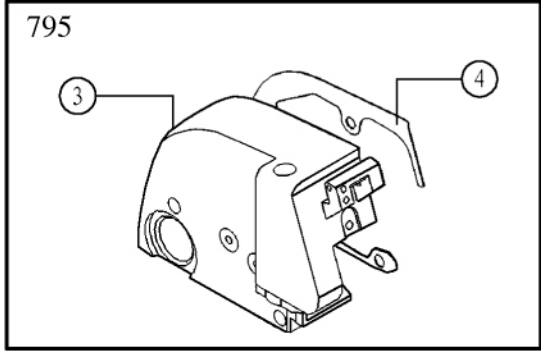
NO.	REASON	CORRECT
1	Thread tension is too strong	Readjust Thread Tension Nut
2	Inadequate pressure of Presser Foot	Readjust Presser Foot pressure
3	Inadequate height of Feed Dogs	Readjust Feed Dogs
4	Knives do not trim neatly	Readjust Knives or sharpen Knives
5	Differential feed is not matched	Readjust differential feed ratio
6	Needle is too thick	Use Proper Needle for fabric and thread
7	Seam width is too narrow against the chain - off finger of Needle Plan.	Readjust seam width or replace chain off finger.

## 环缝出线不顺原因

序号	原因:	对策:
1	押具安装错误	重新正确安装
2	勾针线凸轮运动时间配合不适当	调整适当凸轮方位
3	环缝勾针安装错误	重新正确安装
4	穿线错误	重新正确穿线
5	控线强度太大或太弱	调整适当控线强度
6	针与勾针的关系错误	调整针与勾针的关系
7	针板或押舌起毛边	用砂布或油石打光并抛光
8	控线片已粗糙	用砂布拉滑并抛光

## THE RAD CHAIN DOES NOT COME OUT SMOOTHLY

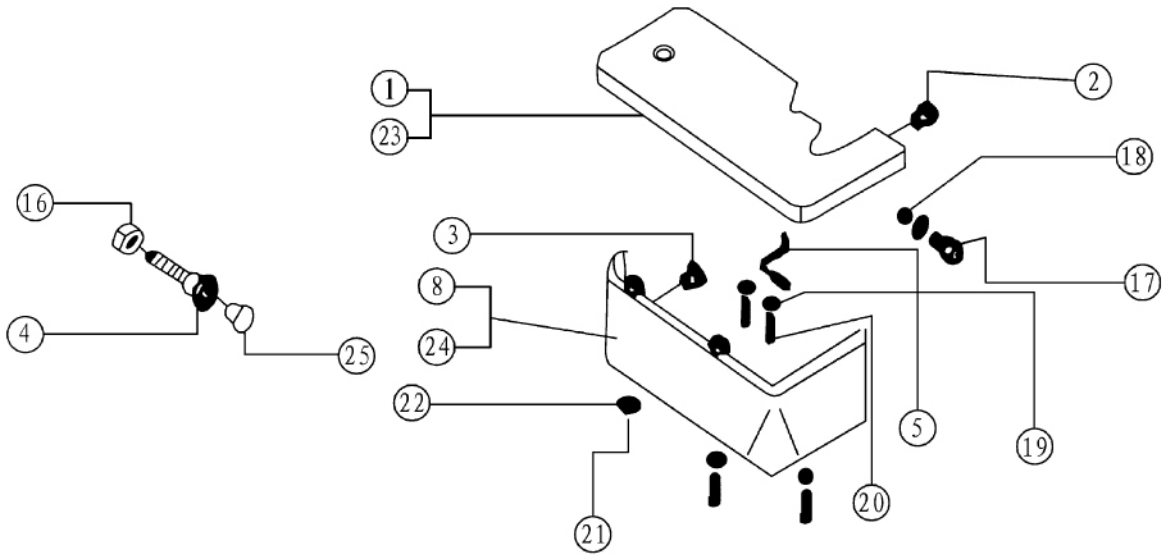
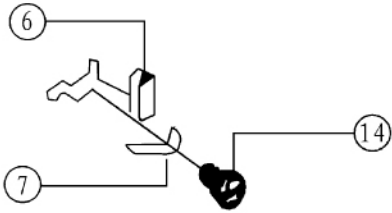
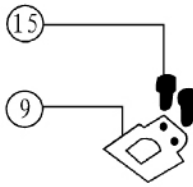
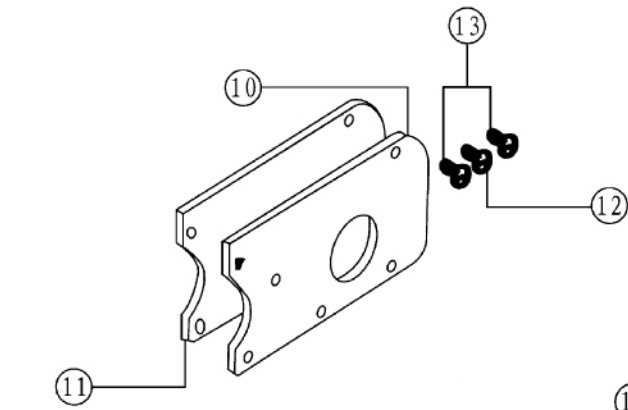
NO.	REASON	CORRECT
1	Presser Foot installed wrong	Reset Presser Foot correctly
2	Inadequate timing of Looper Thread Cam	Readjust Looper thread Cam
3	Double Chain Looper installed wrong	Reset Double Chain Looper correctly
4	Wrong threading	Rethreading correctly
5	Inadequate or too strong thread tension	Readjust Thread Tension Nut
6	Wrong relation of Needle and looper	Readjust Needle and Looper
7	Needle Plate Thread Disc or Presser foot is burred	Grind off, polish or replace new one
8	Thread tension disk is rough	Polish thread tension disk





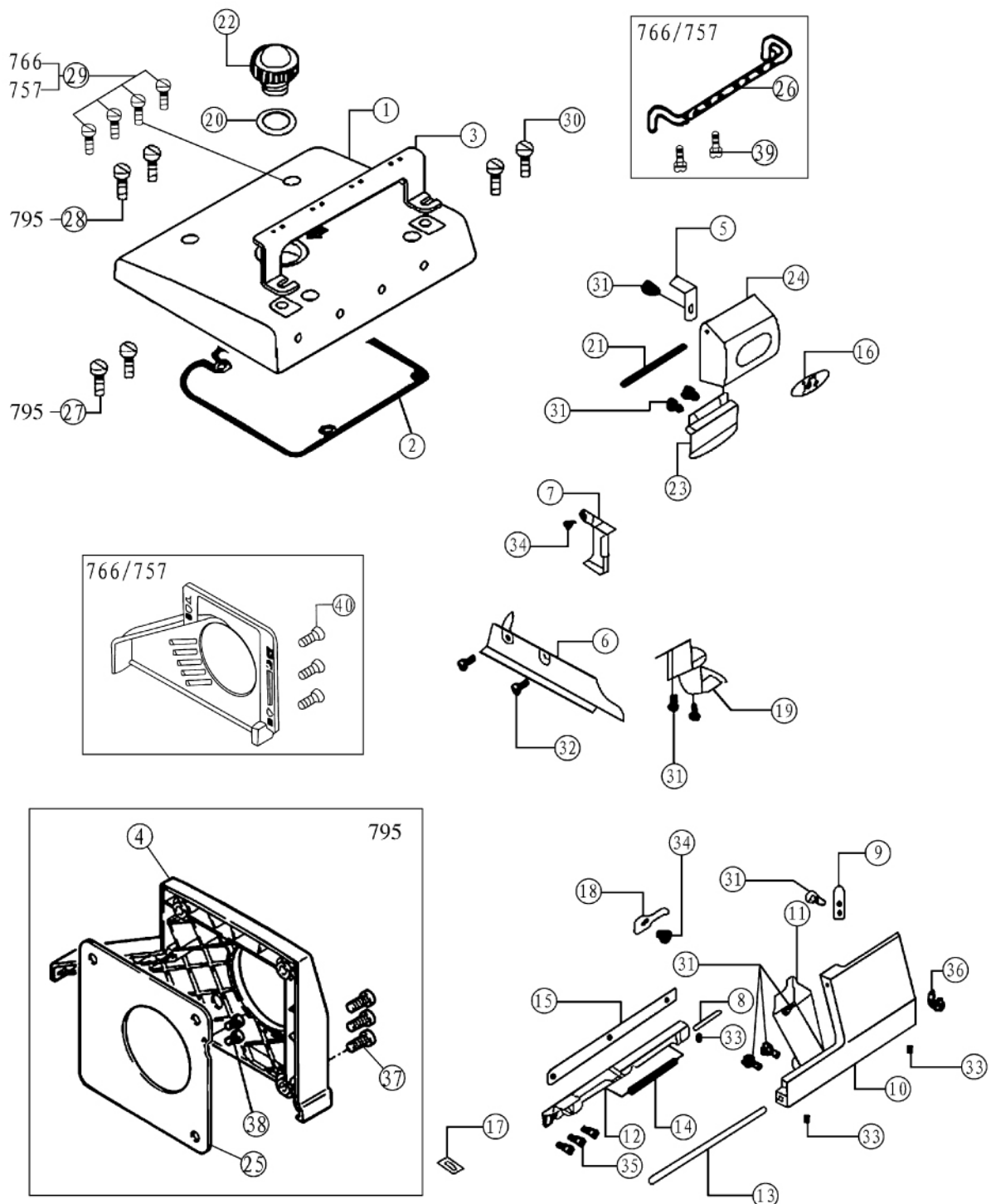
## 一、机壳部分 Frame Assembly

序号 NO.	件号 Part NO.	参考件号 Ref.Part NO.	名称	Description	数量 (Number)		
					三线	四线	五线
					Three-thread	Four-thread	Five-thread
1	300031	--- ---	机壳(795)	Machine frame	1	1	1
	300741	--- ---	机壳(766)	Machine frame	1	1	1
	300811	--- ---	机壳(757)	Machine frame	1	1	1
2	20112001	KA04E1	针线罩壳护板	Needle thread cover plate	1	1	1
3	300082	--- ---	左上侧盖	Left upper cover	1	1	1
4	20122001	--- ---	左上侧盖纸垫	Left upper cover pad	1	1	1
5	20101003	KA09	针杆座	Needle plate	1	1	1
6	20122002	KA14	回油胶套	Rear oil adhesive	1	1	1
7	20122003	KA22	油封	Oil seal	1	1	1
8	20112002	KA25	后盖板	Rear cover	1	1	1
9	20122005	KA26	油封	Oil cover	1	1	1
10	20101004	KA27	盖板	Cover	1	1	1
11	20122007	KA29	盖板垫	Cover washer	1	1	1
12	R03001	KA33	铆钉 2.5 × 4	Rivet	2	2	2
13	20137001	--- ---	机型牌	Machine model plate	1	1	1
14	P01003	KA39	销 B3 × 12	Pin	3	3	3
15	20112003	KA40	滤油网	Oil screen	1	1	1
16	H01003	KA42	挡圈 17	Snap ring	1	1	1
17	20122008	KA21	油封I	Oil seal I	2	2	1
18	20122009	KA24	油封II	Oil seal II	1	1	1
19	20626004	240190	油量调节销	Oil amount adjusting pin	1	1	1
20	20121019	--- ---	JK795Φ2.5 × Φ3.5油管	Oil tube	1	1	1
21	20127001	--- ---	弹簧	Spring	1	1	1
22	20126001	--- ---	工艺孔销	Pin	2	2	2
23	20121019	KA12	JK795Φ2.5 × Φ3.5油管	Oil tube	1	1	1
24	201S11028	SK292	螺钉	Screw	3	3	3
25	201S11027	SK290	螺钉	Screw	2	2	2
26	201S11029	SK299	螺钉	Screw	1	1	1
27	S10005	SK216	螺钉 M3 × 3	Screw M3 × 3	1	1	1
28	201S11033	SK357	螺钉	Screw	1	1	1
29	201S14002	SK268	螺钉	Screw	1	1	1
30	201S11016	SK257	螺钉	Screw	11	11	11
31	201S12005	SK261	螺钉	Screw	1	1	1
32	201S12006	SK280	螺钉	Screw	1	1	1
33	201S30006	SK401	螺钉	Screw	4	4	4
34	20128023	WK23	垫圈	Washer	4	4	4
35	201S13002	SK400	螺钉	Screw	4	4	4
36	201S11021	SK272	螺钉	Screw	1	1	1
37	201S11039	SK308	螺钉	Screw	1	1	1
38	300070	KA04F	前罩	Front oncde cover	1	1	1
39	300080	KA04F	前罩	Front oncde cover	1	1	1
40	20222001	KA06F	757/766机头罩垫	Front oncde cover pad	1	1	1
41	P01003	--- ---	销	Pin	1	1	1
42	20523003	--- ---	油线	Oil wick	1	1	1



## 二、缝台部分 Cloth Plate Assemblies

序号 NO.	件号 Part NO.	参考件号 Ref.Part NO.	名称	Description	数量 (Number)		
					三线	四线	五线
					Three-thread	Four-thread	Five-thread
1	2011200400	KB01E	缝台盖组件	Cloth plate	1	1	0
2	20122012	KB05	胶套	Rubber bushing	1	1	1
3	20122013	KB05E	胶套	Rubber bushing	1	1	1
4	201S30011	KB06E-1	缝台盖防震螺钉	Screw	1	1	1
5	20127003	KB12B	缝台盖开启弹簧	Spring	1	1	1
6	20112011	KB15B	缝台盖扳手	Cloth plate slider cover	1	1	1
7	20127004	KB17	缝台盖簧	Cloth plate cover spring	1	1	1
8	20111001	KB22F	缝台下罩壳	Cloth plate lower plate	1	1	0
9	20111003	KB29	挡油罩	Washer	1	1	1
10	20112012	KB31D-1	上弯针密封板	Upper looper sealing plate	1	1	1
11	20122015	KB31D-2	上弯针密封板垫	Upper looper sealing plate washer	1	1	1
12	201S11018	SK262	螺钉	Screw	1	1	1
13	201S11016	SK257	螺钉	Screw	2	2	2
14	201S20003	SK279	螺钉	Screw	1	1	1
15	201S17004	SK217	螺钉	Screw	2	2	2
16	201S16003	NK26	螺母	Nut	1	1	1
17	201S30007	SK403	螺钉	Screw	1	1	1
18	201S16001	NK23	螺母	Nut	1	1	1
19	W01005	WK06	垫圈 3	Washer 3	2	2	2
20	201S11005	SK221	螺钉	Screw	2	2	2
21	201S11037	SK560	螺钉	Screw	3	3	3
22	20128019	WK05	垫圈	Washer	3	3	3
23	2011200500	KB02E	缝台盖组件	Cloth plate	0	0	1
24	20111002	KB23F	缝台下罩壳	Cloth plate lower plate	0	0	1
25	20122011	KB03	胶套	Rubber bushing	1	1	1



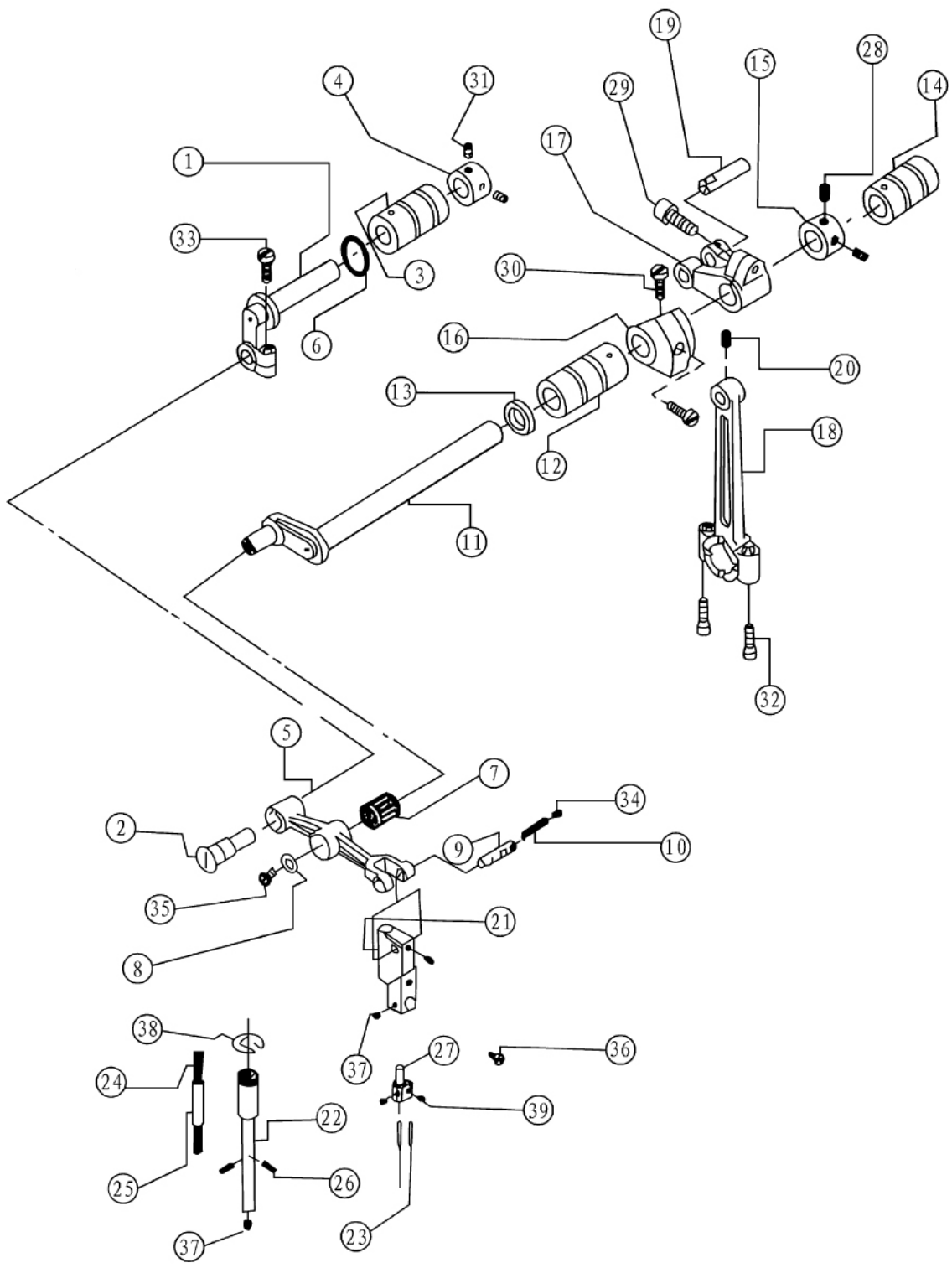
### 三、罩壳部分 Cover Assemblies

序号 NO.	件号 Part NO.	参考件号 Ref.Part NO.	名称	Description	数量 (Number)		
					三线	四线	五线
					Three-thread	Four-thread	Five-thread
1	300083	--- ---	上盖(795)	Upper cover	1	1	1
	300072	KC01F	上盖(757)	Upper cover	1	1	1
	300475	--- ---	上盖(795L)	Upper cover	1	1	1
	300081	--- ---	上盖(766)	Upper cover	1	1	1
2	20122016	--- ---	上盖垫(795)	Upper cover washer	1	1	1
	20322003	KC03	上盖垫(757/766)	Upper cover washer	1	1	1
3	20112013	--- ---	过线架(795)	Thread guide supporter	1	1	1
	20113030	--- ---	过线架(795L)	Thread guide supporter	1	1	1
4	20611003	209550-PB	皮带轮罩(795)	Belt cover	1	1	1
	20211001	KC09F	皮带轮罩(757)	Belt cover	1	1	1
	20311001	--- ---	皮带轮罩(766)	Belt cover	1	1	1
5	20112014	KC13	针线罩壳簧	Thread cover spring	1	1	1
6	20112015	KC15	缝料挡板	Cloth guide plate	1	1	1
7	20112016	KC17	挡油板II	Oil guide II	1	1	1
8	20126003	KC18	前罩架销	Pin	1	1	1
9	20112017	KC20	前罩簧片	Front spring	1	1	1
10	300073	KC21E	前罩	Front cover	1	1	1
11	20112018	KC22B	前罩挡板	Front cover guard	1	1	0
	20112019	KC23B	前罩挡板	Front cover guard	0	0	1
12	20101007	KC24B	前罩架	Front cover hinge	1	1	1
13	20126004	KC25B	前罩销	Hinge pin	1	1	1
14	20127005	KC28	前罩架弹簧	Front cover hinge spring	1	1	1
15	20122017	KC29	前罩架垫	Front cover hinge washer	1	1	1
16	20137002	--- ---	机头牌	Trade mark plate	1	1	1
17	20131064	KC39-4	进油指示	Oil flow sindow	2	2	2
18	20112020	KC36	前罩挡板簧	Front cover snap guard	1	1	1
19	20112021	KC55B	接油斗	Oil guard	1	1	1
20	20122018	KC58	油标垫	Oil level gauge washer	1	1	1
21	20126005	KC62	上罩销	Pin	1	1	1
22	20111005	--- ---	油标盖(795/766)	Oil level gauge plate	1	1	1
	20211002	KF67	油标盖(757)	Oil level gauge plate	1	1	1
23	20111006	--- ---	有机玻璃罩(795/766)	Oil sight	1	1	1
	20211003	KC69F	有机玻璃罩(757)	Oil sight	1	1	1
24	20111018	--- ---	上罩	Upper cover	1	1	1
25	20612005	209551	机壳右盖板(795)	Right frame plate	1	1	1
26	20313001	KC05E	过线架(757/766)	Thread guide supporter	1	1	1
27	201S11015	SK256	螺钉(795)	Screw	2	2	2
28	201S11025	SK278	螺钉(795)	Screw	2	2	2
29	201S11036	SK503	螺钉(757/766)	Screw	4	4	4
30	206S11005	4009	螺钉	Screw	2	2	2
31	201S11009	SK233	螺钉	Screw	9	9	9
32	201S11018	SK262	螺钉	Screw	2	2	2
33	201S15001	SK235	螺钉	Screw	3	3	3
34	201S11014	SK250	螺钉	Screw	2	2	2
35	201S11038	SK576	螺钉	Screw	3	3	3
36	H05002	FK03	卡簧	Snap spring	1	1	1
37	S01013	7176	螺钉M6×14	Screw	3	3	3
38	S01010	7019	螺钉M4×8	Screw	2	2	2
39	S01010	7019	螺钉M4×8	Screw	2	2	2
40	201S11024	SK257	螺钉	Screw	3	3	3



#### 四、主轴部分 Main Shaft Assemblies

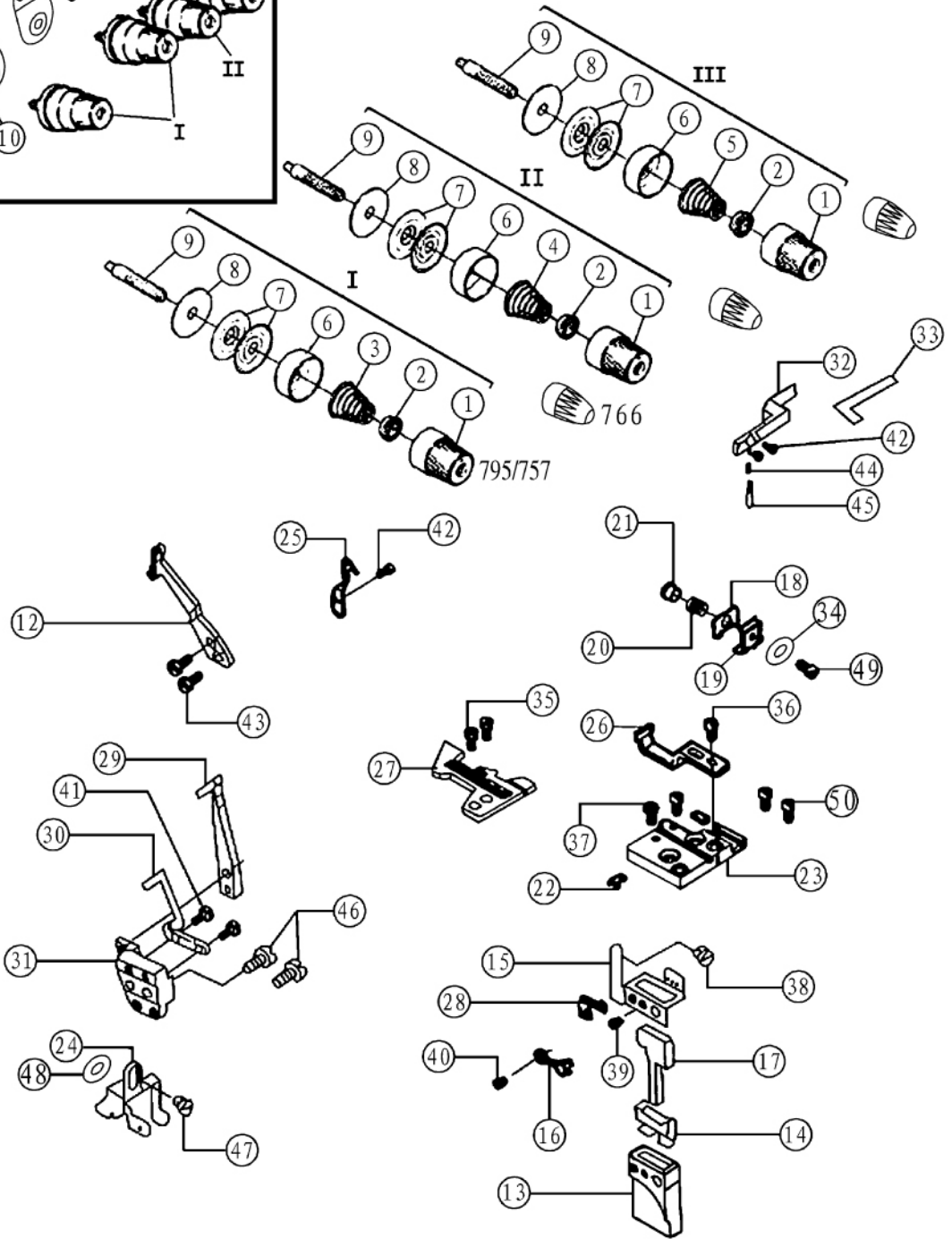
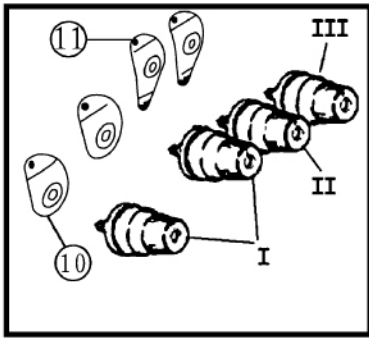
序号 NO.	件号 Part NO.	参考件号 Ref.Part NO.	名称	Description	数量 (Number)		
					三线	四线	五线
					Three-thread	Four-thread	Five-thread
1	20102001	KD01	主轴	Main shaft	1	1	1
2	20111008	KD09	冷却风扇	wheel	1	1	1
3	20101008	KD10D	滚针轴承制动盖	Rear shaft bearing cover	1	1	1
4	20122019	KD12D	滚针轴承制动垫	Washer	1	1	1
5	20128002	KD13	主轴弹簧垫圈	Main shaft spring washer	1	1	1
6	20103002	KD14	主轴中轴套	Main shaft bysgubg asm	1	1	1
7	O01003	KD15	O型圈 16 × 1.8	Seal ring	1	1	1
8	B03001	KD16	轴承 6003-Z	Bearing	2	2	2
9	20125001	KD17	油泵蜗杆	Oil pump worm	1	1	1
10	20129001	KD20	卡簧	Snap spring	1	1	1
11	20103003	KD21	主轴左套筒	Main shaft left bushing	1	1	1
12	B04001	KD22	轴承 6200-2Z	Bearing	1	1	1
13	20101009	KD27D	轴承盖	Bearing cover	1	1	0
	20101010	KD26D	轴承盖	Bearing cover	0	0	1
14	20122020	KD28D	轴承盖垫圈	Bearing cover washer	1	1	1
15	20101044	--- ---	皮带轮	Pulley	1	1	1
16	20101012	--- ---	皮带轮方键	Key	1	1	1
17	20126006	KD33	凸轮轴	Bulgy pulley shaft	0	0	1
18	30128008	240102	摆架轴垫圈	washer	1	1	0
19	201S11040	777-5361	螺钉	Screw	1	1	0
20	201S11034	SK374	螺钉	Screw	1	1	1
21	20128024	WK24	垫圈	washer	1	1	1
22	201S15004	SK347	螺钉	Screw	2	2	2
23	201S11016	SK257	螺钉	Screw	3	3	3
24	201S14002	SK270	螺钉	Screw	1	1	1
25	201S11012	SK241	螺钉	Screw	3	3	3
26	201S15005	SK396	油瓦螺钉	Screw	2	2	2
27	201S15001	SK235	油孔螺钉	Screw	1	1	1





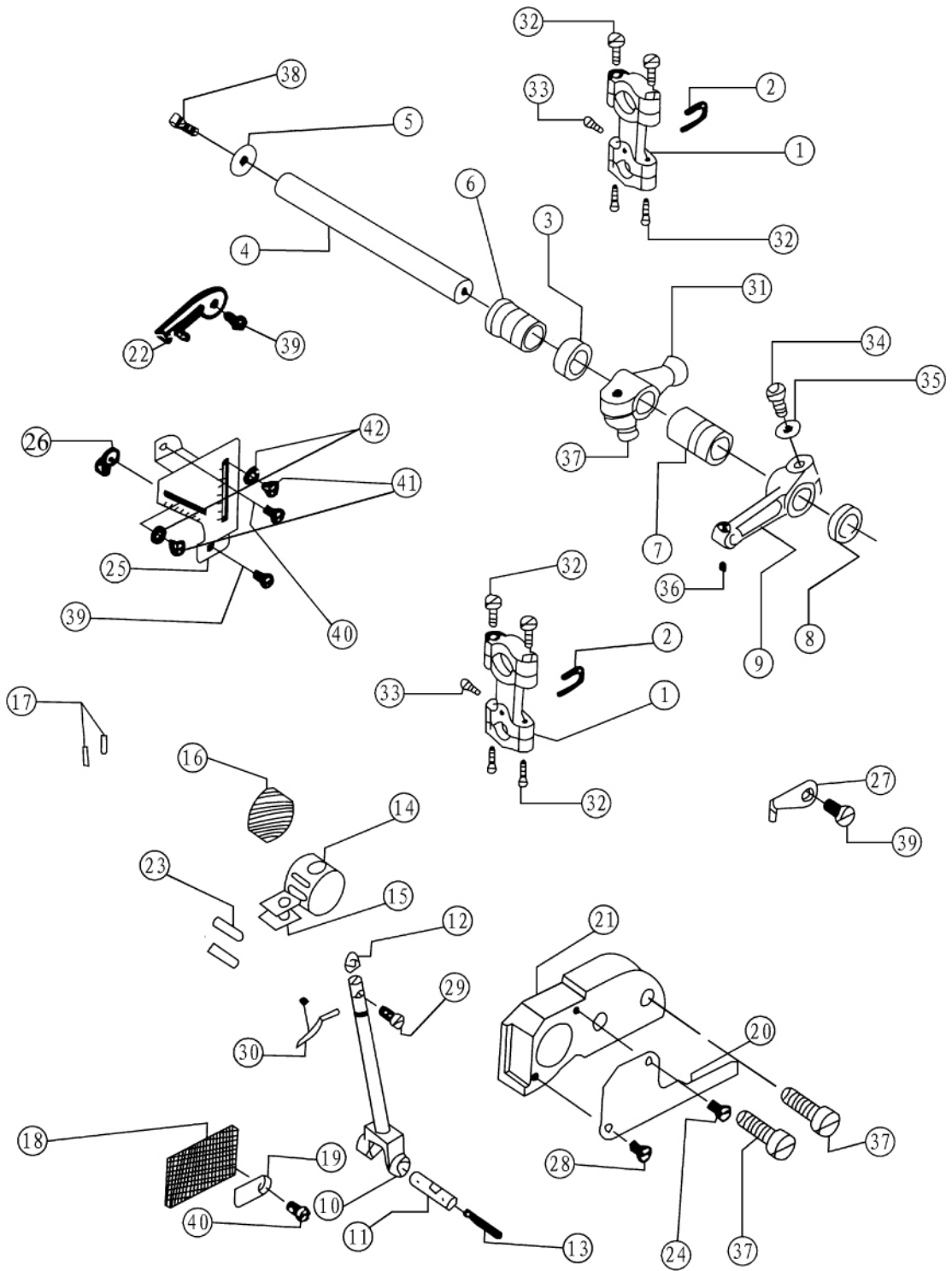
## 五、针杆部分 Needle Bar Assemblies

序号 NO.	件号 Part NO.	参考件号 Ref.Part NO.	名称	Description	数量 (Number)		
					三线	四线	五线
					Three-thread	Four-thread	Five-thread
1	20102002	KFO1F	针杆曲柄轴	Needle bar driving frame rock shaft	1	1	1
2	20126007	KFO2	针杆曲柄销	Eccentric shaft	1	1	1
3	20103004	KFO5	针杆轴后套筒	Needle bar shaft bushing back	1	1	1
4	20108001	KFO7	挡圈	Snap ring	1	1	1
5	20104001	KFO9	针杆传动曲柄	Throat driving crank	1	1	1
6	20122022	KF38	油封	Oil seal	1	1	1
7	B07006	KF11	滚针轴承	Needle bearing	1	1	1
8	20128004	KF12	垫圈	Washer ring	1	1	1
9	20126008	KF14	针夹导线销	Throat clip guide ping	1	1	1
10	20123021	KF16	油线	Oil wick	1	1	1
11	20102003	KF17	针杆摆轴	Throat bar rock crank	1	1	1
12	20103005	KF18	行针轴左套筒	Needle driving shaft bearing	1	1	1
13	20122021	KF19	密封圈	Seal ring	2	2	2
14	20103006	KF20	行针轴右套筒	Needle driving shaft bearing	1	1	1
15	20108002	KF21	挡圈	Snap ring	2	2	2
16	20101013	KF23	针杆摆轴平衡块	Balance block	1	1	1
17	20104002	KF26	针杆摆轴曲柄	Needle bar frame rock shaft crank	0	1	0
	20104003	KF25	针杆摆轴曲柄	Needle bar frame rock shaft crank	1	0	1
18	20105001	KF28	针杆传动连杆	Needle bar connecting rod	1	1	1
19	20126009	KF30	针杆传动连杆销	Connecting link pin	1	1	1
20	201S12005	SK261	行针传动连杆顶丝	Screw	1	1	1
21	20101014	KF32	针夹导套	Throat clip guide bushing	1	1	1
22	2010200400	--- ---	针杆组件	Needle bar	1	1	1
23	20117012	DC × 27	机针 (三四线)	Needle	1	2	0
	20117013	DC × 27	机针(五线, 70)	Needle	0	0	2
	20117014	DC × 27	机针(86)	Needle	0	0	2
24	20123021	KF35	油线	Oil wick	1	1	1
25	20121020	KF35-1	塑料管	Plastic tube	1	1	1
26	20123005	KF37	油线	Oil wick	2	2	2
27	20134002	KG142-E	针古 (三线)	Needle clamp	1	0	0
	20134001	KG131-E	针古 (四线)	Needle clamp	0	1	0
	20134003	KG153-E	针古 (五线)	Needle clamp	0	0	1
	20134004	KG155-E	针古 (厚料)	Needle clamp ( for thick )	0	0	1
28	201S15003	SK293	挡圈螺钉	Snap ring screw	2	2	2
29	201S13003	SK612	螺钉	Hexagon socket screw	1	1	1
30	201S30003	SK291	平衡块螺钉	Balance block position screw	2	2	2
31	201S14002	SK293	行针传动连杆顶丝	Frame rock shaft set screw	3	3	3
32	201S20006	SK385	行针传动连杆螺钉	Shaft position screw	2	2	2
33	201S11026	SK287	针杆曲柄紧固螺钉	Screw	1	1	1
34	201S17001	SK204	油线堵油螺钉	Screw	1	1	1
35	201S17004	SK217	垫圈螺钉	Screw	1	1	1
36	S01022	SK221	垫圈螺钉	Screw	1	1	1
37	S010005	SK216	螺钉	Screw	4	4	4
38	H05008	EK01	卡簧	Snap ring	1	1	1
39	201S14001	SK216	顶针螺钉	Screw	2	2	



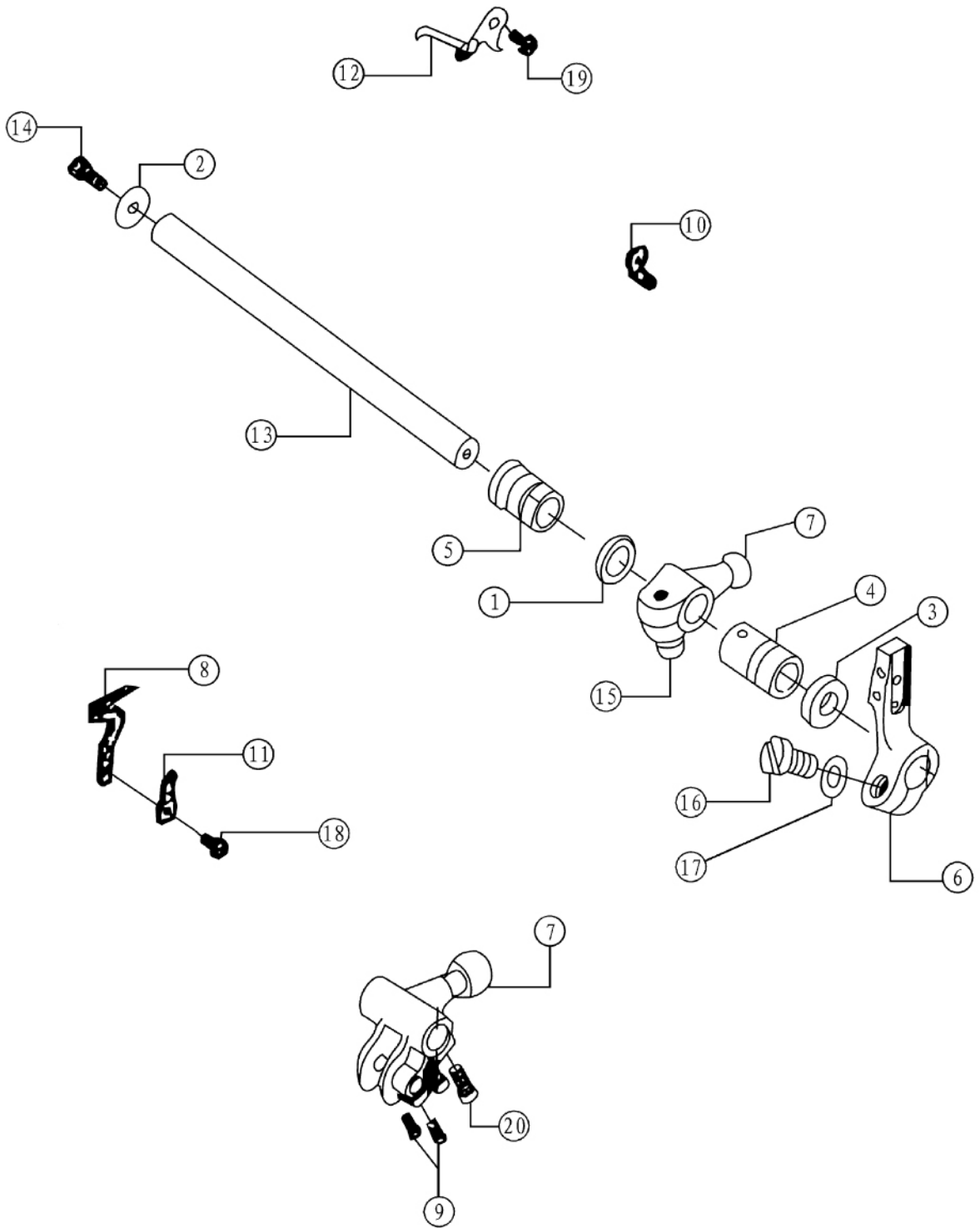
## 六、过线部分 Thread Guide Assemblies

序号 NO.	件号 Part NO.	参考件号 Ref.Part NO.	名称	Description	数量 (Number)		
					三线	四线	五线
					Three-thread	Four-thread	Five-thread
1	20111013	208447-UA	调压螺母(795/757)	Thread tension screw	3	4	4
	20311002	KG04F	调压螺母(766)	Thread tension screw	3	4	4
2	20111014	208448	调压止动套	Thread tension spring	3	4	4
3	20127018	201037	调压簧	Thread tension spring	1	2	2
4	20127019	201068	调压簧	Thread tension spring	1	1	1
5	20127020	201086	调压簧	Thread tension spring	1	1	1
6	20111015	208450-UA	调压止动盖	Thread tension spring	3	4	4
7	20112057	210319	夹线片	Thread tension disc	6	8	8
8	20123018	208449	夹线片垫	Thread tension disc washer	3	4	4
9	201S30016	005082A	夹线螺钉	Thread tension screw	3	4	4
10	20113001	209622	过线板	Thread guide	1	2	2
	20213001	209622	过线板(757)	Thread guide	1	2	2
11	20113002	202849	过线板	Thread guide	2	2	2
	20213002	202849	过线板(757)	Thread guide	2	2	2
12	20113003	KG11F	挑线板	Upper thread take-up	1	1	0
	20113004	KG6F	挑线板	Upper thread take-up	0	0	1
13	20111009	KG12	硅油盒	Oil box	1	1	1
14	20112022	KG13	油毡垫架	Oil felt	1	1	1
15	20113005	KG14	过线架	Thread guide	1	1	1
16	20122023	KG15D	硅油盒胶垫	Oil box washer	1	1	1
17	20123006	KG16	油毡垫	Oil felt	1	1	1
18	20113006	KG17	拦线板	Tension spring	1	1	1
19	20113007	KG18	拦线板支架	Thread controller disc holder	1	1	1
20	20127006	KG19	弹簧	Spring	1	1	1
21	20103008	KG21	拦线板导向套	Thread controller disc guide bushing	1	1	1
22	20101015	KG24-1	针板座键	Throat plate positioning rod	2	2	2
23	20101016	KG24-2D	针板座	Throat plate bracket	1	1	1
24	20113008	KG54	过线架	Thread mark guide	1	1	0
	20113009	KG42	过线架	Thread mark guide	0	0	1
25	20117002	KG59	护针档	Teat needle guard	1	1	1
26	20117003	KG471	前护针档	Front needle guard	1	0	0
	20117004	KG472	前护针档	Front needle guard	0	1	0
27	20115001	E800	针板	Needle plate	1	0	0
	20115002	E919	针板	Needle plate	0	1	0
	20115003	E982	针板	Needle plate	0	0	1
	20115004	--- ---	针板(180)	Needle plate	1	0	0
	20115005	--- ---	针板(181)	Needle plate	0	1	0
	20115006	--- ---	针板(16S)	Needle plate	1	0	0
	20115007	--- ---	针板(厚料)	Needle plate	0	0	1
	20115008	--- ---	针板 (70)	Needle plate	0	0	1
	20115009	--- ---	针板 (袜子机)	Needle plate	1	0	0
28	20113010	KG25	过线	Thread guide	0	0	1
29	20117005	KG31D	护针档I	Needle guard I	0	0	1
30	20117006	KG37	护针档II	Needle guard II	0	0	1
31	20101017	KU18	护针档座	Needle guard bracket	1	1	0
	20101018	KG39	护针档座	Needle guard bracket	0	0	1
32	20101019	KG26-E	挡板	Snap plate	1	1	1
33	20122024	KG46	挡板垫	Snap plate washer	1	1	1
34	W01011	KF31	垫圈	Washer	1	1	1
35	201S17005	SK260	针板螺钉	Throat screw	2	2	2
36	201S11008	SK230	前护针板螺钉	Front needle snap screw	1	1	1
37	201S11029	SK299	针板座螺钉	Throat plate bracket screw	2	2	2
38	201S11014	SK250	过线架螺钉	Thread guide holder screw	1	1	1
39	201S11001	SK207	硅油盒固定螺钉	Oil box set screw	1	1	1
40	201S20005	SK359	胶垫固定螺钉	Oil box set screw	1	1	1
41	201S11003	SK209	后护针螺钉	Rear needle guard screw	2	2	2
42	201S12009	SK242	护针档螺钉	Needle guard screw	3	3	3
43	201S11009	SK233	挑线螺钉	Thread take up screw	2	2	2
44	201S15001	SK235	挡板螺钉II	Snap plate screw II	1	1	1
45	201S30010	SK236	挡板定位螺钉	Snap plate set screw	1	1	1
46	201S11022	SK275	护针档座螺钉	screw	2	2	2
47	201S11018	SK262	过线螺钉	screw	1	1	1
48	20128030	KQ42	垫圈	Washer	1	1	1
49	S01006	SK221	螺钉	screw	1	1	1
50	20122011	KB05	胶套	Rubber bushing	2	2	2



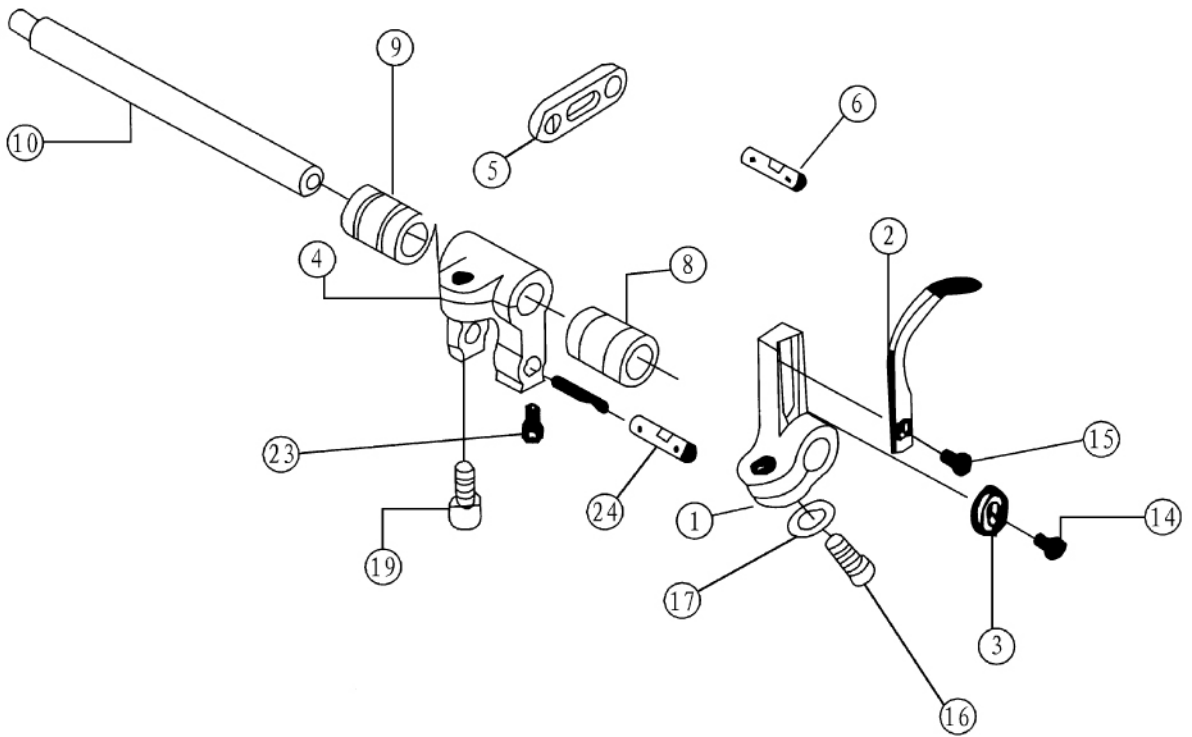
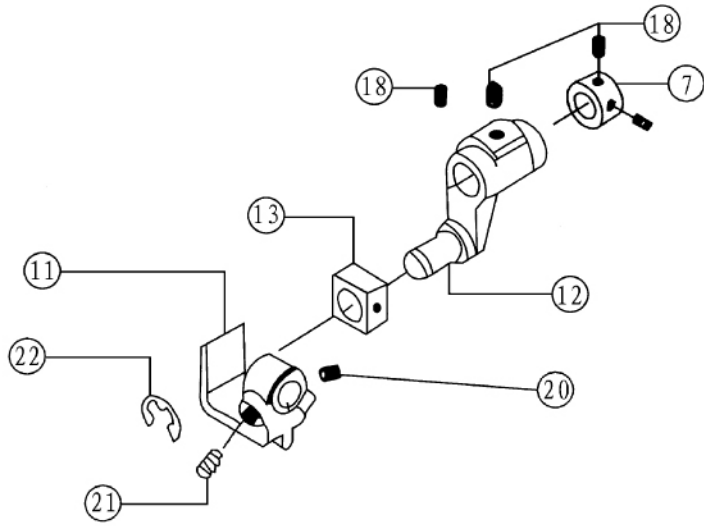
## 七、上弯针部分 Upper Looper Assemblies

序号 NO.	件号 Part NO.	参考件号 Ref.Part NO.	名称	Description	数量 (Number)		
					三线	四线	五线
					Three-thread	Four-thread	Five-thread
1	20105002	KJ01B	弯针连杆	Looper link	2	2	2
2	20126010	KJ06B	弯针连杆摆架	Looper link holder	2	2	2
3	20128005	KJ13F	厚垫圈	Thickness washer	1	1	1
4	20102006	KJ15	上弯针轴	Upper looper shaft	1	1	1
5	20128007	KJ16	大垫圈	Big washer	1	1	1
6	20103009	KJ19F	上弯针轴后套筒	Upper looper shaft rear bushing	1	1	1
7	20103010	KJ20	上弯针轴前套筒	Upper looper shaft front bushing	1	1	1
8	20122025	KJ21	上弯针轴油封	Upper looper shaft oil seal	1	1	1
9	20104004	KJ22	上弯针轴曲柄	Upper looper shaft crank	1	1	1
10	20104005	KJ26	上弯针摇杆	Upper looper shaft bar	1	1	1
11	20126011	KJ27	摇杆销	Connecting rod shaft pin	1	1	1
12	20112023	KJ28	摇杆垫片	Washer	1	1	1
13	20123021	KJ29	油线	Oil wick	1	1	1
14	20109001	KJ30F	上弯针轴导块	Upper looper slide block	1	1	1
15	20123008	KJ33	油毡	Oil felt	2	2	2
16	20123009	KJ34	油毡	Oil felt	1	1	1
17	20113013	KJ58	穿线管	Thread tube	2	2	2
18	20112024	KJ39F	滤油板	Screen oil plate	1	1	1
19	20112025	KJ40F	压板	Felt plate	1	1	1
20	20112026	KJ41	导架座挡板	Thread holder snap plate	1	1	1
21	20101020	KJ42E	上弯针轴导架座	Upper looper shaft slide bar bracket	1	1	1
22	20113014	KJ68	两眼过线板	Tow for thread guide	1	1	1
23	20523003	KJ44	油线	Oil wick	1	1	1
24	201S11005	SK221	导架座挡板螺钉	Screw	1	1	1
25	20112027	KJ61D	调线刻度板	Thread amount regulating plate	1	1	1
26	20113011	KJ63	上弯针过线	Upper looper thread guard	1	1	1
27	20113012	KJ66D	上弯针轴过线板	Upper looper shaft thread plate	1	1	1
28	201S17006	SK451	导架座挡板螺钉	Screw	1	1	1
29	201S11007	SK229	上弯针紧固螺钉	Upper looper set screw	1	1	1
30	20117007	LP26	上弯针	Looper	1	1	1
31	20104006	KJ11B-E	上弯针摆动曲柄	Upper looper crank bearing	0	1	1
	20104007	KG09B-E	上弯针摆动曲柄	Upper looper crank bearing	1	0	0
32	201S20006	SK385	连杆螺钉	Shaft screw	8	8	8
33	201S11035	SK408	弯针连杆止动螺钉	Screw	2	2	2
34	201S12007	SK298	上弯针轴曲柄螺钉	Upper looper crank screw	1	1	1
35	20128021	WK11	垫圈	Washer	1	1	1
36	S10005	SK216	上弯针轴曲柄顶丝	Link pin set screw	1	1	1
37	201S13003	S102	摆动曲柄螺钉	Nexagon socket screw	3	3	3
38	201S12005	SK261	上弯针轴螺钉	Upper looper shaft screw	1	1	1
39	201S11016	SK257	过线架螺钉	Thread guide screw	3	3	3
40	201S11014	SK262	调线刻度板螺钉	Screw	2	2	2
41	201S11006	SK223	弯针过线螺钉	Thread guide screw	2	2	2
42	20128020	WK09	弯针过线垫圈	Thread guide washer	2	2	2



## 八、下弯针部分 Lower Looper Assemblies

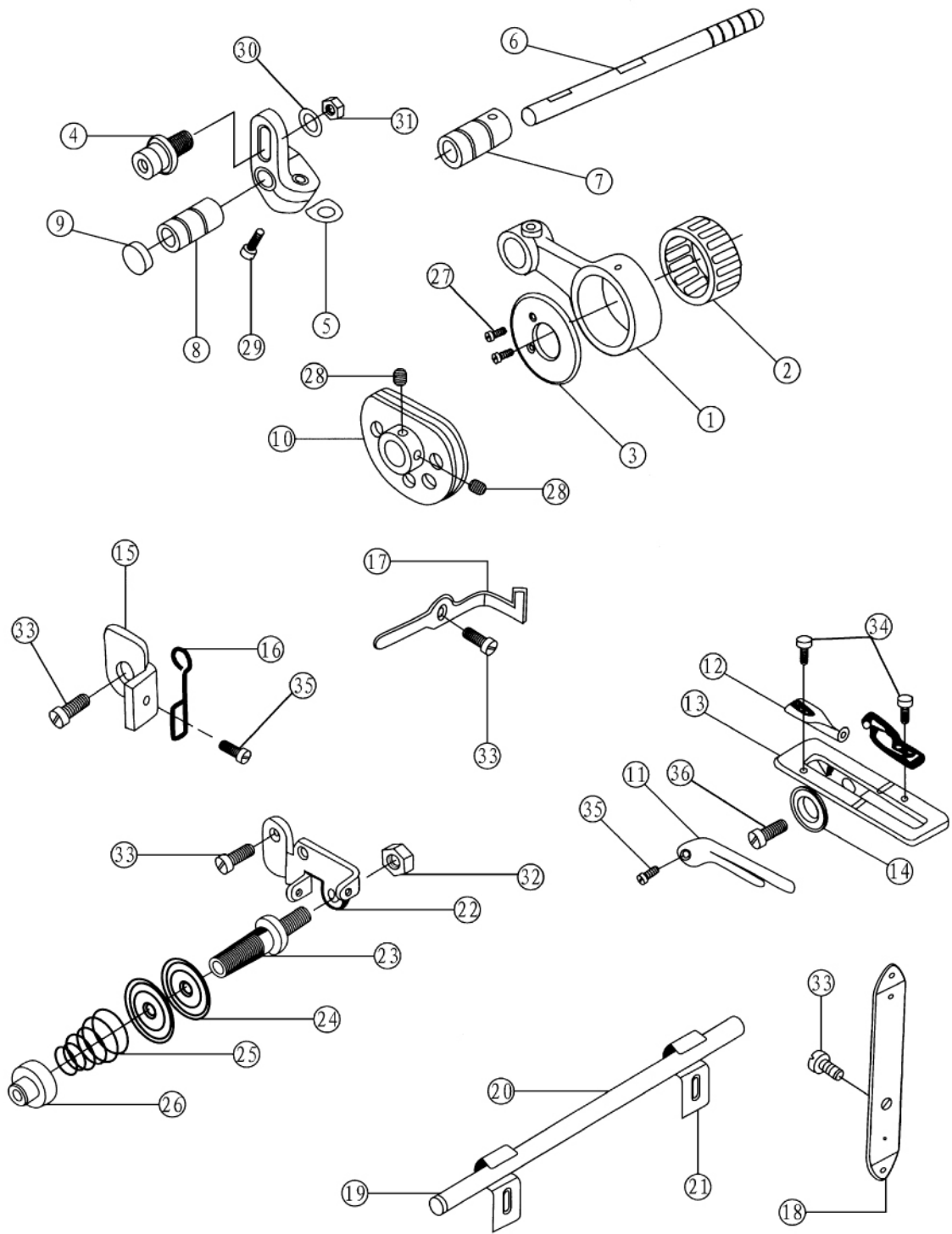
序号 NO.	件号 Part NO.	参考件号 Ref.Part NO.	名称	Description	数量 (Number)		
					三线	四线	五线
					Three-thread	Four-thread	Five-thread
1	20128009	KJ13F	厚垫圈	Washer	1	1	1
2	20128007	KJ16	下弯针轴垫圈	Lower looper shaft washer	1	1	1
3	20622019	KL20	油封	Oil seal	1	1	1
4	20103011	KL21	下弯针前套筒	Lower looper front bushing	1	1	1
5	20103015	KN11	横轴右套筒	Left horizontal shaft bushing	1	1	1
6	20104008	KL23-3	下弯针架	Lower looper holder	1	1	0
	20104025	--- ---	下弯针架	Lower looper holder	0	0	1
7	20104009	KL612	下弯针摆动曲柄	Lower looper crank	1	1	0
	20104010	KL09B	下弯针摆动曲柄	Lower looper crank	0	0	1
8	20117008	KL25	下弯针	Lower looper	1	1	0
	20117009	--- ---	下弯针	Lower looper	0	0	1
9	201S11007	SK230	曲柄螺钉	Crank screw	0	0	2
10	20113015	KL38	过线	Thread guide	1	1	1
11	20113016	KL43	下弯针过线	Lower looper thread guide	1	1	1
12	20113017	KL46	下弯针三孔过线	Lower looper3-thread guide	1	1	1
13	20102007	KL57	下弯针轴	Lower looper shaft	1	1	0
	20102008	KL16	下弯针轴	Lower looper shaft	0	0	1
14	201S12005	SK261	下弯针轴螺钉	Low looper shaft screw	1	1	1
15	201S13003	SK612	摆动曲柄螺钉	Crank screw	1	1	1
16	201S12007	SK298	下弯针架螺钉	Lower looper holder screw	1	1	1
17	20128021	WK11	下弯针架垫圈	Lower looper holder washer	2	2	2
18	206S11002	SK241	下弯针螺钉	Lower looper	1	1	1
19	201S11016	SK257	下弯针过线螺钉	Thread guide screw	1	1	1
20	301S30013	200152	曲柄螺钉	Crank screw	0	0	





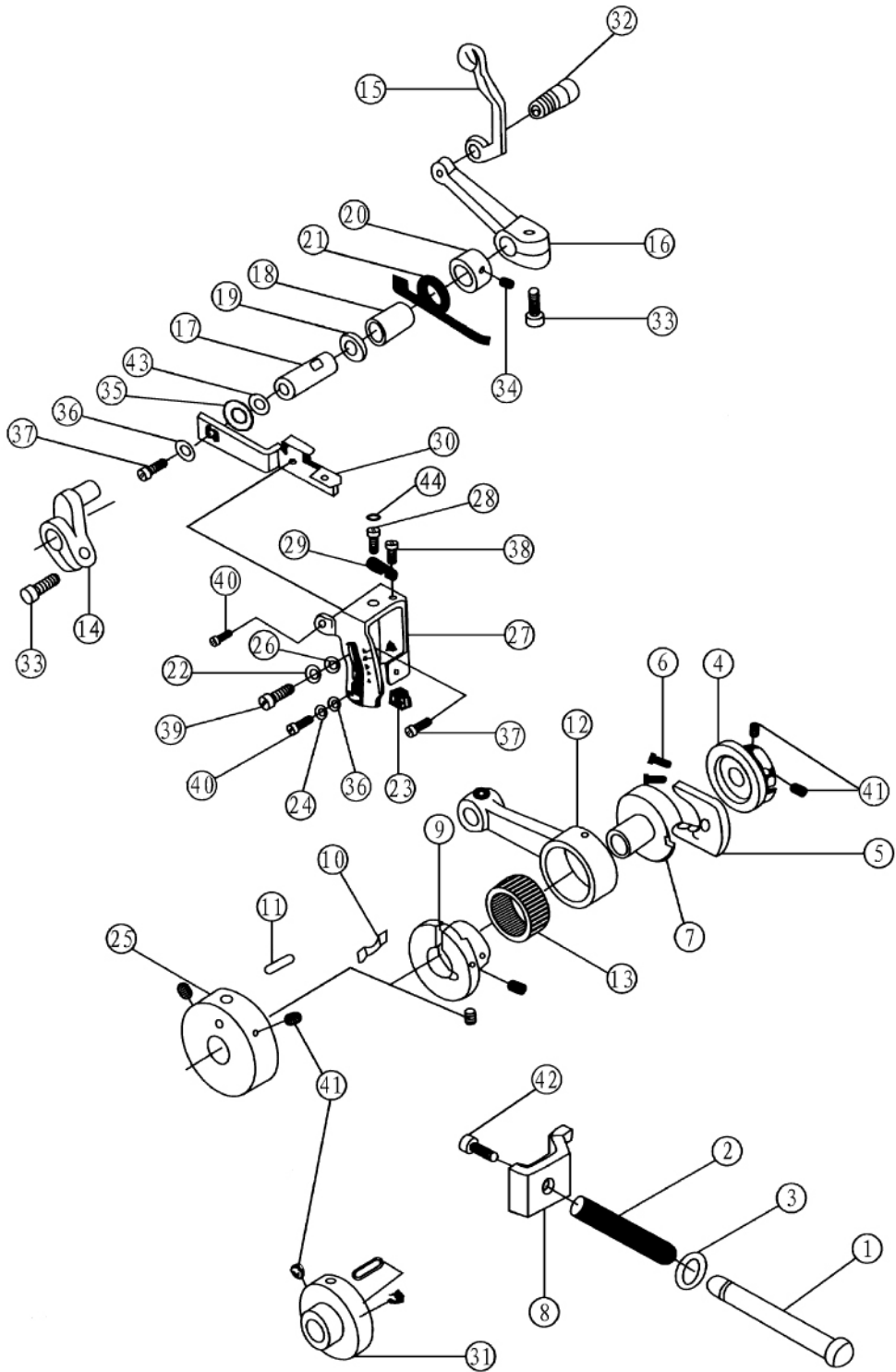
## 九、前弯针部分 Front Loper Assemblies

序号 NO.	件号 Part NO.	参考件号 Ref.Part NO.	名称	Description	数量 (Number)		
					三线	四线	五线
					Three-thread	Four-thread	Five-thread
1	20104011	KM01	前弯针架	Front looper shaft holder	0	0	1
2	20117010	KM04	前弯针	Front looper	0	0	1
3	20128014	KM06	前弯针调节垫片	Washer	0	0	1
4	20104012	KM08	前弯针曲柄	Front looper crank	0	0	1
5	20609017	KM11	调节板	Regulating plate	0	0	1
6	20126013	KM12	调节板销	Regulating plate pin	0	0	2
7	20108001	KF07	挡圈	Snap ring	0	0	1
8	20103013	KM17	前弯针轴前套筒	Front looper shaft front bushing	0	0	1
9	20103014	KM18	前弯针轴后套筒	Front looper shaft rear bushing	0	0	1
10	20102009	KM26	前弯针轴	Front looper shaft	0	0	1
11	20101021	KM27D	驱动座	Driving lever	0	0	1
12	20104013	KM28	驱动曲柄	Driving crank	0	0	1
13	20109002	KM29D	前弯针滑块	Front looper slide block	0	0	1
14	201S11003	SK209	前弯针调节垫螺钉	Thread guide screw	0	0	1
15	201S11008	SK230	前弯针固定螺钉	Front looper guide set screw	0	0	1
16	201S12007	SK298	前弯针架螺钉	Front looper holder set screw	0	0	1
17	20128021	WK11	下弯针架垫圈	Washer	0	0	1
18	201S12002	SK251	前弯针曲柄螺钉	Front looper crank screw	0	0	4
19	201S13003	SK612	前弯针曲柄固定螺钉	Crank holder set screw	0	0	1
20	201S14002	SK270	驱动曲柄顶丝	Driving lever set screw	0	0	1
21	201S30009	SK499	驱动曲柄螺钉	Driving lever set screw	0	0	1
22	20129003	EK03	卡簧	Snap ring	0	0	1
23	201S12005	SK261	曲柄销固定螺钉	Screw	0	0	1
24	20126022	--- ---	调节板销	Regulating plate pin	0	0	1



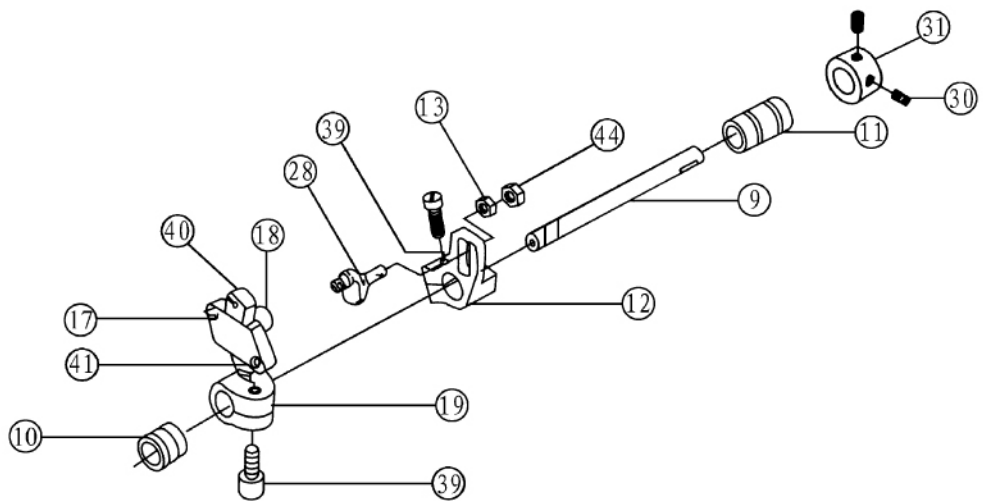
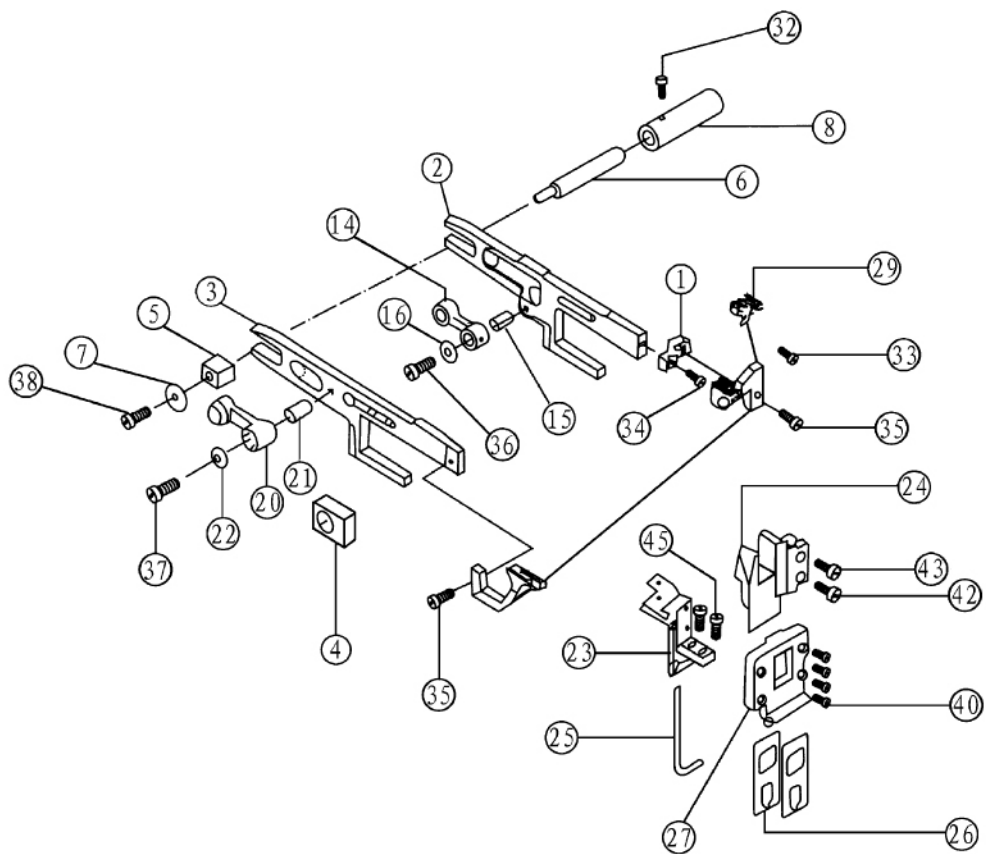
## 十、打线凸轮部分 Cam Assemblies

序号 NO.	件号 Part NO.	参考件号 Ref.Part NO.	名称	Description	数量 (Number)		
					三线	四线	五线
					Three-thread	Four-thread	Five-thread
1	20105003	KN01	横轴连杆	Horizontal shaft link	0	0	1
2	20124002	KN02	连杆滚针轴承	Needle bearing	0	0	1
3	20112028	KN03	轴承挡圈	Snap ring	0	0	1
4	20126014	KN05	曲柄销	Pin	0	0	1
5	20104014	KN08	横轴曲柄	Horizontal shaft crank	0	0	1
6	20102010	KN10	横轴	Horizontal shaft	0	0	1
7	20103015	KN11	横轴右套筒	Left horizontal shaft bushing	0	0	1
8	20103016	KN12	横轴左套筒	Right horizontal shaft bushing	0	0	1
9	20122028	KN13	油封	Oil seal	0	0	1
10	2011301800	KM8	打线凸轮组件	Looper thread take-up cam	0	0	1
11	20113020	KN20	导线板	Thread guide	0	0	1
12	20113021	KN22	过线板	Thread	0	0	2
13	20112029	KN24	导线架	Bracket	0	0	1
14	20128015	KN26	波形垫圈	Flat spring	0	0	1
15	20112030	KN27	限位板	Astrict position plate	0	0	1
16	20113022	KN29	过线环	Thread guide ring	0	0	1
17	20113023	KN32	二眼过线板	Thread guide	0	0	1
18	20113024	KN34	后导线板	Thread guide	0	0	1
19	20113025	KN36-1	导线管套	Thread pipe cover	0	0	2
20	20113026	KN36-2	过线管	Thread pipe	0	0	1
21	20112031	KN37	过线板压板	Bracket	0	0	2
22	20112032	KN38	压线器架	Bracket	0	0	1
23	201S30012	KN40	夹线挺	Screw	0	0	1
24	20112033	KN42	夹线片	Tension disc	0	0	2
25	20127007	KN43	夹线簧	Spring	0	0	1
26	201S16007	KN44	调压螺母	Nut	0	0	1
27	201S17001	SK205	轴承挡圈螺钉	Bearing snap ring screw	0	0	2
28	201S14001	SK216	打线凸轮顶丝	Cam set screw	0	0	2
29	201S13003	SK612	横轴曲柄螺钉	Crank set screw	0	0	1
30	20128033	WK11	曲柄调节销垫圈	Washer	0	0	1
31	201S16002	WK04	曲柄调节螺母	Nut	0	0	1
32	201S16003	NK26	夹线器架螺母	Nut	0	0	1
33	201S11014	SK257	夹线器架螺钉	Screw	0	0	4
34	201S11001	SK207	过线板螺钉	Thread guide plate screw	0	0	2
35	201S11009	SK233	导线板螺钉	Thread guide plate screw	0	0	2
36	201S20001	SK264	导线架固定螺钉	Screw	0	0	1



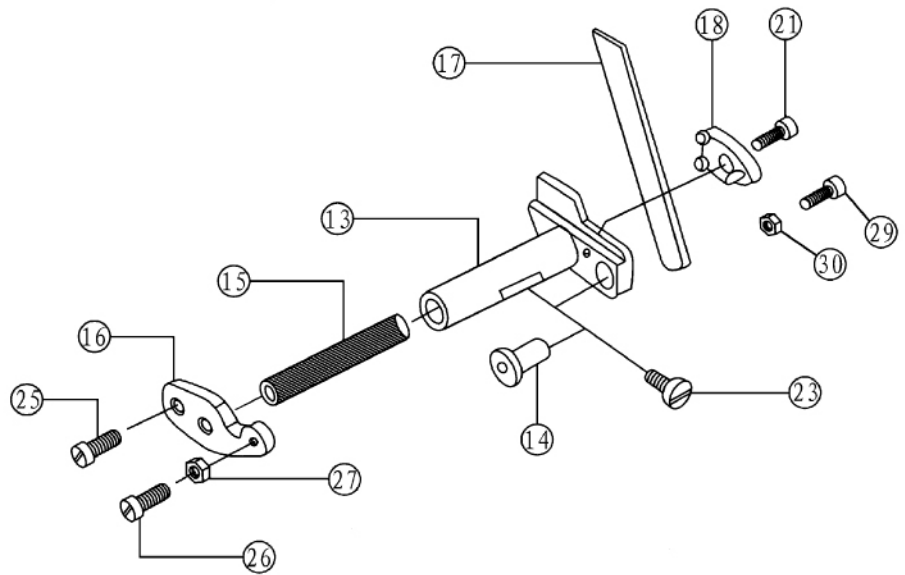
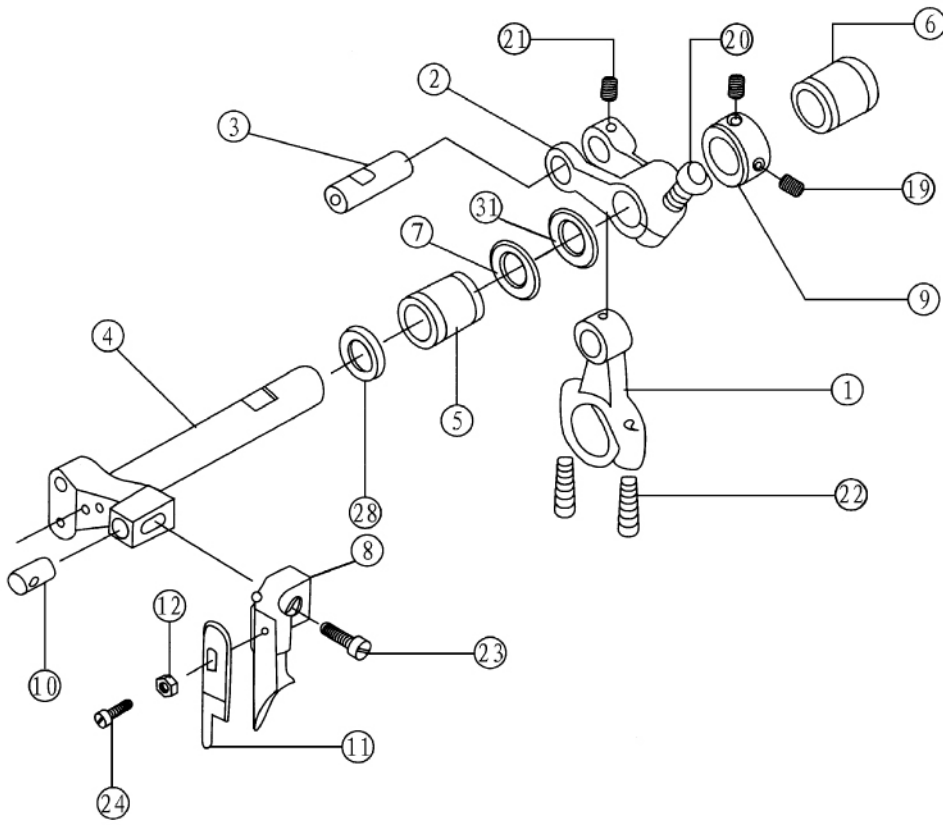
## 十一、差动送布部分 Different Feed Assemblies

序号 NO.	件号 Part NO.	参考件号 Ref.Part NO.	名称	Description	数量 (Number)		
					三线	四线	五线
					Three-thread	Four-thread	Five-thread
1	20102011	KP01	送布调节器杆	Stitch length regulating shaft	1	1	1
2	20127008	KP02	针距调节器簧	Spring	1	1	1
3	O01016	KP03	送布调节器杆油封	Oil washer	1	1	1
4	2011000100	KP05D	针距调节凸轮组件	Stitch length regulation cam asm	1	1	1
5	20109004	KP06D	针距调节滑块	Stitch length regulating block	1	1	1
6	20127009	KP08	针距调节滑块压簧	Stitch length regulating block spring	2	2	2
7	20110002	KP09D	针距凸轮	Stitch length cam	1	1	1
8	20112034	KP11	针距调节压板	Stitch length regulating plate	1	1	1
9	20110003	KP13D	送布凸轮	Feed length cam	1	1	1
10	20112035	KP15	送布凸轮簧	Feed cam spring	1	1	1
11	P01004	KP18-1	送布凸轮座销	Feed cam pin	1	1	1
12	20105004	KP21	送布连杆	Feed link	1	1	1
13	B07007	KP22	滚动轴承	Feed rod rolling pin bearing	1	1	1
14	20104015	KP23	送布曲柄	Feed crank	1	1	1
15	20105005	KP25	差动连杆	Differential link	1	1	1
16	20104016	KP28	差动曲柄	Differential crank	1	1	1
17	20102012	KP30B	差动轴	Differential shaft	1	1	1
18	20103017	KP31	差动轴套筒	Differential shaft bearing	1	1	1
19	20122029	KP32	油封	Oil seal	1	1	1
20	20108005	KP34	挡圈	Snap ring	1	1	1
21	20127010	KP35D	弹簧	Spring	1	1	1
22	201S16008	KP39	调节螺母	Washer	1	1	1
23	20109005	KP43	调节滑块	Regulating block	1	1	1
24	20128027	KP46	垫圈	Washer	1	1	1
25	20110004	KP59	送布凸轮座	Feed bam	1	1	0
26	20128028	KP60	垫圈	Washer	1	1	1
27	20112036	KP62	差动调节架	Differential regulation holder	1	1	1
28	201S30013	KP63	调节螺钉	Regulating screw	1	1	1
29	20127011	KP64	卡簧	Regulating screw spring	1	1	1
30	20112037	KP65B	差动调节杆	Differential regulating link	1	1	1
31	2010402300	KP18-2	曲柄连杆凸轮	Crank link cam	0	0	1
32	201S20008	SK452	差动连杆螺钉	Differential link screw	1	1	1
33	201S13003	SK612	差动曲柄螺钉	Differential crank screw	2	2	2
34	201S12002	SK251	挡圈螺钉	Snap ring screw	1	1	1
35	20128024	WK24	垫圈	Washer	1	1	1
36	W01006	WK01	垫圈	Washer	2	2	2
37	201S11016	SK262	差动调节杆螺钉	Differential position screw	1	1	1
38	201S11005	SK221	卡簧螺钉	Spring screw	1	1	1
39	201S30005	SK399	差动调节螺钉	Differential regulating screw	1	1	1
40	201S11018	SK262	差动调节架螺钉	Differential regulating screw	1	1	1
41	201S14002	SK215	送布凸轮调节螺钉	Screw	4	4	4
42	201S12005	SK261	针距调节压板螺钉	Screw	1	1	1
43	20122038	--- ---	差动轴密封圈	Washer	1	1	1
44	20137004	--- ---	旋向标牌	Mard plate	1	1	1



## 十二、拾牙送布部分 Feed Dog Assemblies

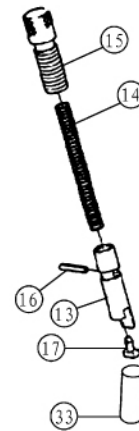
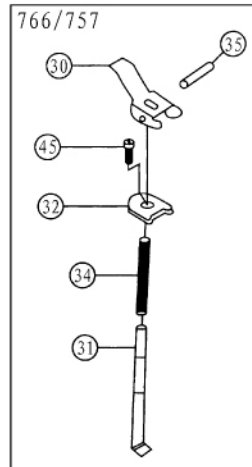
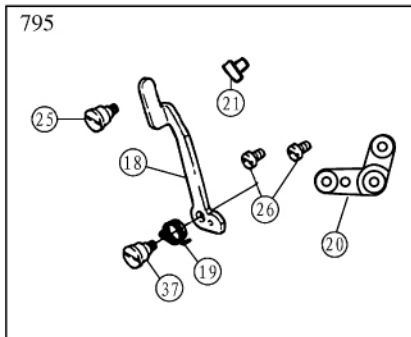
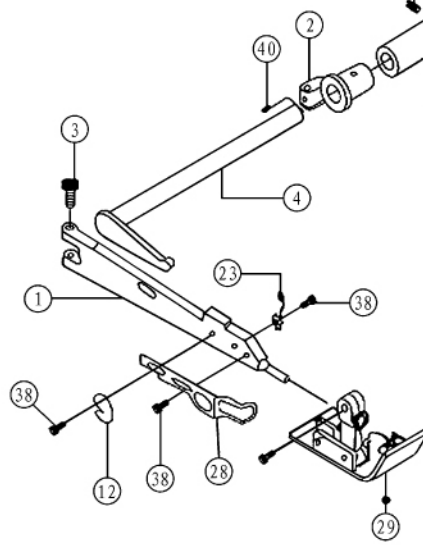
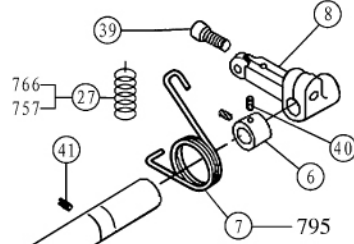
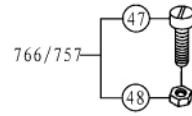
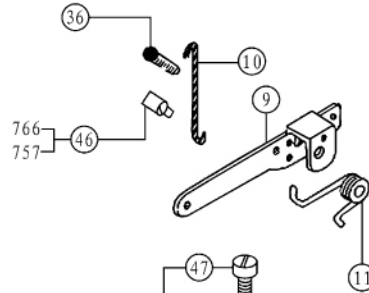
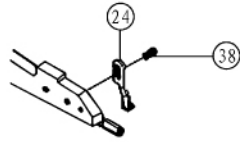
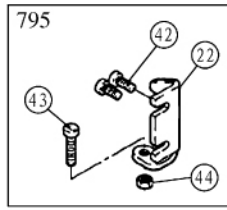
序号 NO.	件号 Part NO.	参考件号 Ref.Part NO.	名称	Description	数量 (Number)		
					三线	四线	五线
					Three-thread	Four-thread	Five-thread
1	20109006	KQ05	牙连接板	Dog link plate	1	1	1
2	20106001	KQ07	送布牙架	Feed dog holder	1	1	1
3	20106002	KQ10	差动牙架	Differential feed dog holder	1	1	1
4	20109007	--- ---	拾牙滑块	Feed dog lift slide block	1	1	1
5	20109008	KQ14	差动送布滑块	Differential feed slide block	1	1	1
6	20102013	KQ15	滑块偏心轴	Slide block eccentric shaft	1	1	1
7	20112038	KQ17	差动送布滑块偏心垫	Slide block eccentric washer	1	1	1
8	20103018	KQ19	滑块偏心轴套筒	Slide block eccentric shaft bushing	1	1	1
9	20102014	KQ21	送布轴	Feed shaft	1	1	1
10	20103019	KQ24	送布轴左套筒	Left feed shaft bushing	1	1	1
11	20103020	KQ25	送布轴右套筒	Right feed shaft bushing	1	1	1
12	20104017	KQ28	送布调节曲柄	Feed regulating crank	1	1	1
13	20128021	KQ31	垫圈	Washer	1	1	1
14	20105006	KQ33	送布牙架连杆	Feed dog holder link	1	1	1
15	20103021	KQ34	送布牙架连杆套	Feed dog holder link bushing	1	1	1
16	20128029	KQ35	送布牙架连杆套垫圈	Differential feed dog holder link bushing	1	1	1
17	20112039	KQ37-1	曲柄滑块盖板	Crank slide block cover	1	1	1
18	20109010	KQ37-2	曲柄滑块	Crank slide block	1	1	1
19	20104018	KQ37-3	差动牙调节曲柄	Feed regulating crank	1	1	1
20	20105007	KQ40	差动牙架连杆	Differential feed dog holder link	1	1	1
21	20103022	KQ41	差动牙架连杆套	Differential feed dog holder link bushing	1	1	1
22	20128030	KQ42	差动牙架连杆套垫圈	holder link bushing washer	2	2	2
23	20101023	KQ46D	挡油板	Screw oil plate	1	1	1
24	20109011	KQ47	牙架导轨	Feed dog carrier connection rod	1	1	1
25	20122030	KQ48	密封圈	Sealing connecting ring	1	1	1
26	20122031	KQ49	活动油封	Adjustable oil seal	2	2	2
27	20109012	KQ50	密封导架	Sealing connecting rod	1	1	1
28	20102015	KQ90	送布牙连杆偏心轴	Feed dog link eccentric shaft	1	1	1
29	2011401700	--- ---	三四送料组件	Feed form	1	1	0
	2011401800	--- ---	三线薄料送料组件	Feed form	1	0	0
	2011401900	--- ---	五线送料组件	Feed form	0	0	1
	2011402000	--- ---	厚料送料组件	Feed form	0	0	1
30	201S15003	SK293	挡圈螺钉	Snap ring screw	2	2	2
31	20108002	KF21	挡圈	Snap ring	1	1	1
32	201S12002	SK251	调牙套筒螺钉	Screw	1	1	1
33	201S11003	SK209	辅助牙螺钉	Screw	1	1	1
34	201S11012	SK241	牙架接板螺钉	Screw	1	1	1
35	201S11038	SK576	主送布牙螺钉	Main feed dog screw	2	2	2
36	201S12003	SK253	左牙叉连杆螺钉	Screw	1	1	1
37	201S12004	--- ---	右牙叉连杆螺钉	Screw	1	1	1
38	201S17003	SK212	拾牙滑块螺钉	Screw	1	1	1
39	201S13003	SK612	右送布曲柄螺钉	Crank screw	2	2	2
40	201S11005	SK221	左曲柄螺钉	Crank screw	4	4	4
41	201S11032	SK343	曲柄滑动盖螺钉	Crank slide block screw	2	2	2
42	201S11018	SK262	牙叉叉块螺钉II	Tooth rocks screw II	1	1	1
43	201S11023	SK277	牙叉叉块螺钉I	Tooth rocks screw I	1	1	1
44	201S16002	NK25	右送布曲柄销螺母	Nut	1	1	1
45	201S11016	SK257	挡油板螺钉	Screw	2	2	2





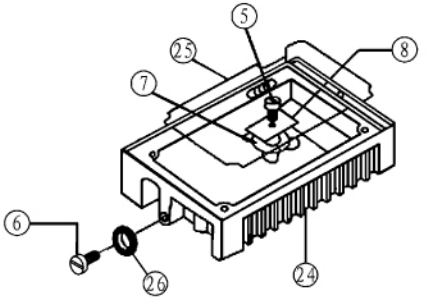
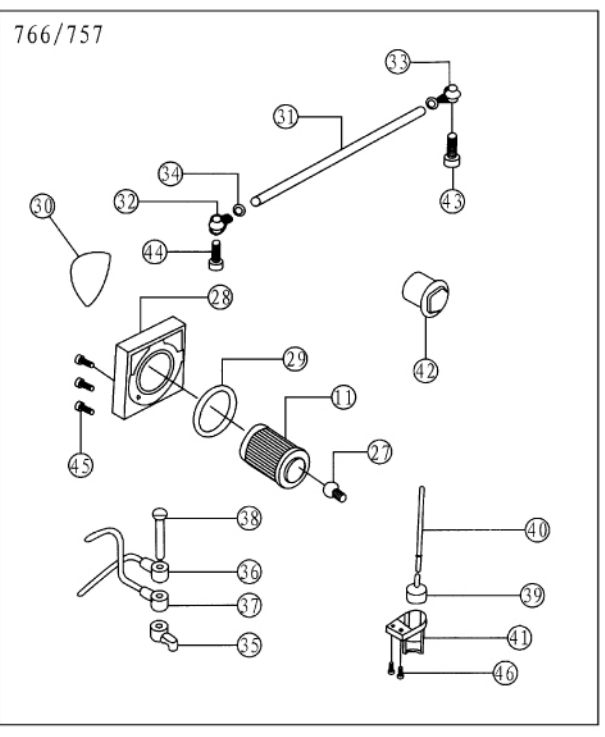
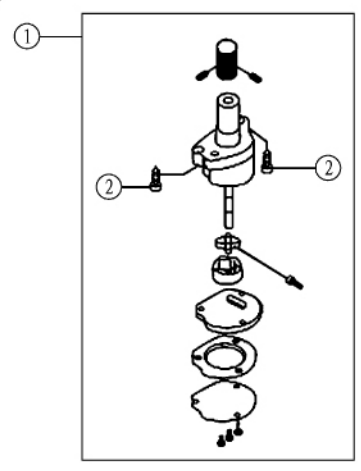
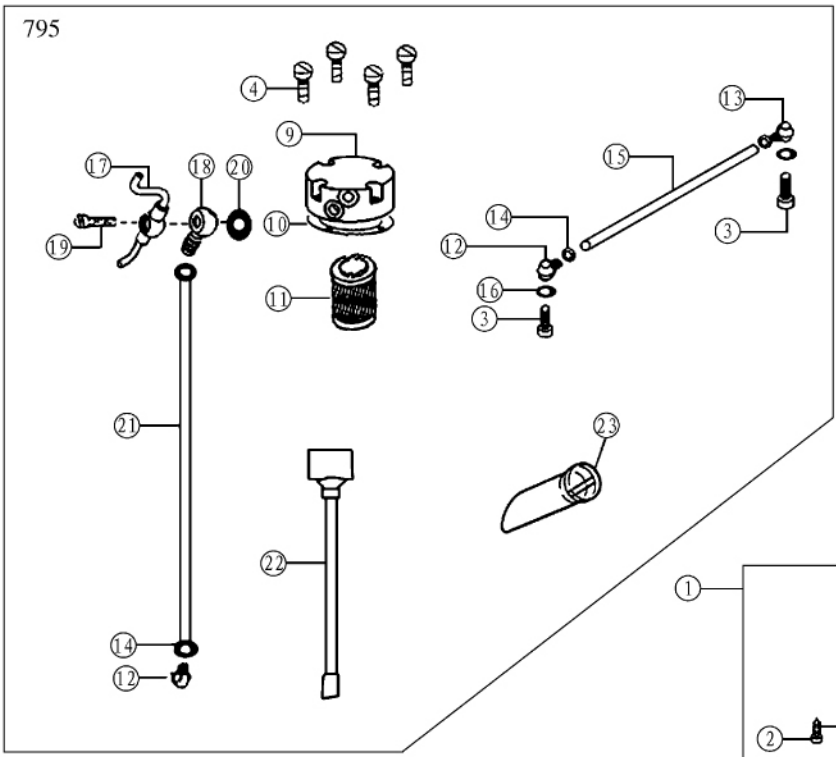
### 十三、剪切部分 Trimming Assemblies

序号 NO.	件号 Part NO.	参考件号 Ref.Part NO.	名称	Description	数量 (Number)		
					三线	四线	五线
					Three-thread	Four-thread	Five-thread
1	20105008	KR01	上刀连杆	Upper knife driving connecting link	1	1	1
2	20104019	KR04	上刀曲柄	Upper knife crank	1	1	0
	20104020	KR03	上刀曲柄	Upper knife crank	0	0	1
3	20126015	KR07	曲柄销	Crank pin	1	1	1
4	20102017	KR09	上刀架轴	Upper knife frame rock shaft	1	1	1
5	20103023	KR12	上刀轴左套筒	Left shaft bushing	1	1	1
6	20103024	KR13	上刀轴右套筒	Right shaft bushing	1	1	1
7	20128031	KR14	垫圈	Washer	1	1	1
8	20101024	KR20	上刀座	Upper knife holder	1	1	0
	20101025	KR19	上刀座	Upper knife holder	0	0	1
	20101053	--- ---	上刀座(厚料)	Upper knife holder	0	0	1
9	20108002	KR21	挡圈	Snap ring	1	1	1
10	20126016	KR22	上刀架轴销	Upper knife holder pin	1	1	1
11	20119001	KR23	上刀	Upper knife	1	1	1
	20119005	--- ---	上刀(厚料)	Upper knife	0	0	1
12	20128020	WK09	垫片	Washer	1	1	1
13	20102018	KR27	下刀架	Lower knife holder	1	1	0
	20102019	KR26	下刀架	Lower knife holder	0	0	1
	20102023	--- ---	下刀架(倒回缝)	Lower knife holder	1	1	0
14	20103025	KR29	下刀架套筒	Lower knife holder bushing	1	1	1
15	20127012	KR32	下刀架弹簧	Lower knife holder spring	1	1	1
16	20112040	KR33	下刀架挡板	Lower knife holder	1	1	1
17	20119002	KR35	下刀	Lower knife	1	1	1
	20119006	--- ---	下刀(厚料)	Lower knife	0	0	1
18	20101026	KR36	下刀压板	Lower knife holder lock plate	1	1	1
19	201S15003	SK293	挡圈螺钉	Snap ring screw	2	2	2
20	201S13003	SK612	上刀曲柄紧固螺钉	Upper knife crank set screw	1	1	1
21	201S12005	SK270	上刀曲柄销螺钉	Upper knife crank pin screw	2	2	2
22	201S20006	SK385	上刀连杆螺钉	Connecting link screw	2	2	2
23	201S11022	SK277	上刀座螺钉	Upper knife holder screw	2	2	2
24	201S12001	SK246	上刀螺钉	Upper knife screw	1	1	1
25	201S11017	SK262	下刀挡板螺钉	Lower knife snap plate screw	1	1	1
26	201S11012	SK241	下刀挡板螺钉	Lower knife snap plate screw	1	1	1
27	201S16001	NK23	下刀挡板螺母	Lower knife snap plate screw	1	1	1
28	20122038	KF19	油封	Oil seal	1	1	1
29	201S11015	SK256	下刀架螺钉	Lower knife holder screw	1	1	1
30	W01006	KQ35	垫圈 4	Washer	1	1	0
	20128025	--- ---	垫片	Washer	0	0	1
31	20628014	KR14	垫圈	Washer	1	1	1



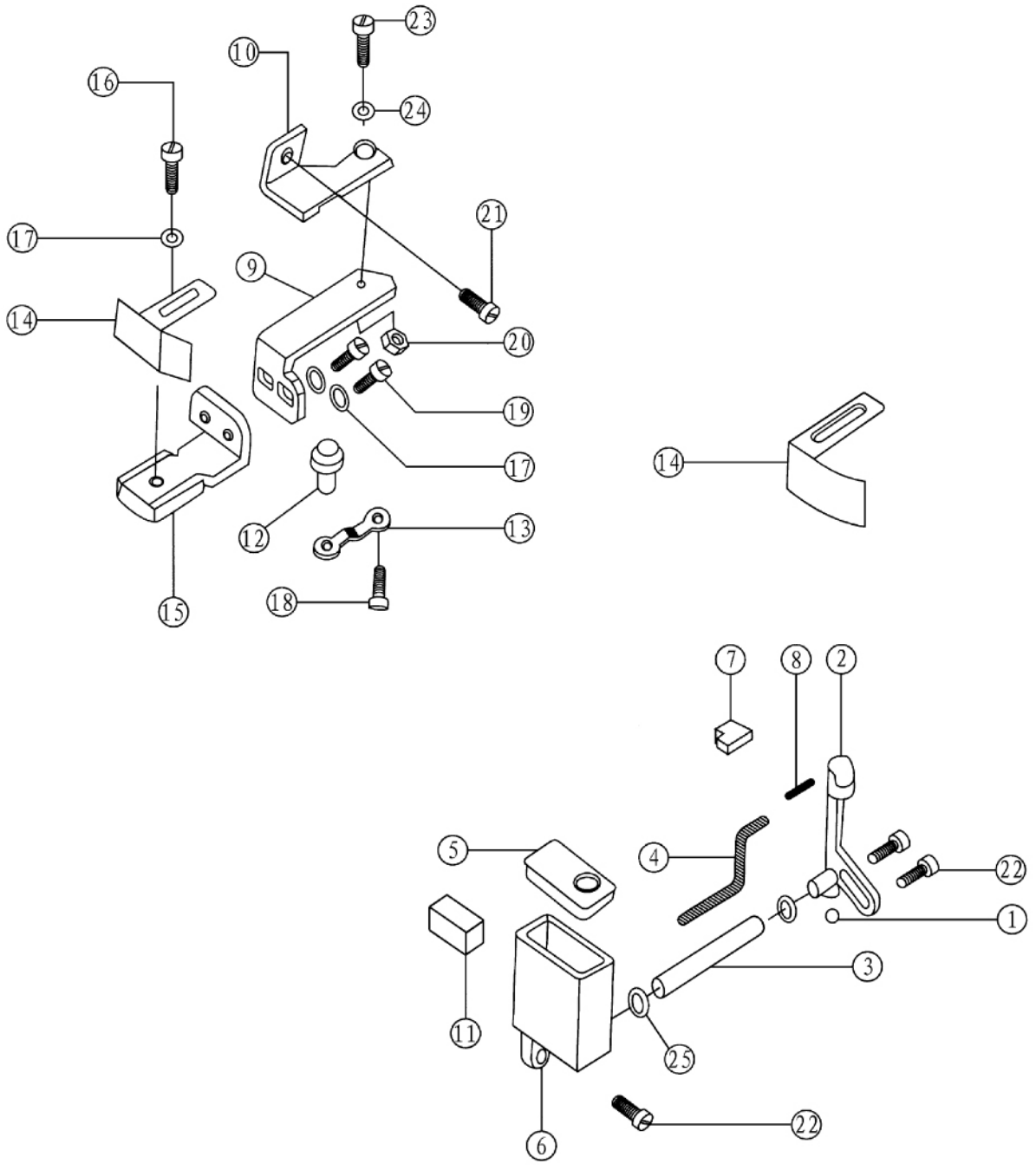
## 十四、压布部分 Presser foot Assemblies

序号 NO.	件号 Part NO.	参考件号 Ref.Part NO.	名称	Description	数量 (Number)		
					三线	四线	五线
					Three-thread	Four-thread	Five-thread
1	20101027	KS01	压脚架	Presser foot holder	1	1	1
2	20103026	KS02D	压脚轴套	Presser foot shaft bushing	1	1	1
3	201S11004	KS03	压脚架连接板螺钉	Screw	1	1	1
4	20102020	KS09	压脚架轴	Presser foot holder shaft	1	1	1
5	20103027	KS10D	压脚轴套筒	Presser foot shaft bushing	1	1	1
6	20108006	KS12	压脚轴挡圈	Presser foot shaft snap ring	1	1	1
7	20127013	KP35D	抬压脚扭簧(795)	Presser foot lifting spring	1	1	1
8	20104021	KS14F	压脚曲柄	Presser foot crank	1	1	1
9	20112041	KS18	抬压脚柄	Presser foot lifting lever	1	1	1
10	20126018	KS20	压脚柄勾	Hook	1	1	1
11	20127014	KS21	压脚柄簧	Spring	1	1	1
12	20119003	KS24	割线刀	Thread cutting knife	1	1	1
13	20102021	KS26-2D	压杆	Presser bar	1	1	1
14	20127015	KS27	压杆簧	Presser bar spring	1	1	1
15	201S30014	KS28	压杆螺钉(795)	Presser bar screw	1	1	1
	203S30001	KS28	757/766压杆螺钉	Presser bar screw	1	1	1
16	203S20001	SK439	757/766螺钉	Screw	1	1	1
	201S20009	--- ---	螺钉(795)	Screw	1	1	1
17	20611006	274013	压杆减震块	Presser bar shockproof block	1	1	1
18	20112074	--- ---	压杆扳手	Presser foot lifting handle	1	1	1
19	20627010	274017	压脚扳手扭簧	Presser foot lifting handle spring	1	1	1
20	20101052	--- ---	压脚扳手限位板	Presser foot lifting handle restricter	1	1	1
21	30122018	240123	防震垫	Washer	1	1	1
22	20612031	209676	压脚角板	Presser foot corner plate	1	1	1
23	20127016	KS44	压脚弹簧	Presser foot spring	0	0	1
24	20112042	KS54	压脚架连接板	Presser foot holder connection plate	1	1	0
25	206S20007	--- ---	螺钉	Screw	1	1	1
26	S02003	S157	螺钉	Screw	2	2	2
27	20327001	KS13	抬挡簧(757/766)	Presser foot lifting spring	1	1	1
28	20112045	KS65	压脚架护罩	Presser foot holder cover	1	1	1
29	20116001	P253E-3	压脚组件	Presser foot form	1	0	0
	20116002	P253E-4	压脚组件	Presser foot form	0	1	0
	20116003	P504-A	压脚组件	Presser foot form	0	0	1
	20116006	--- ---	压脚组件 (16S)	Presser foot form	1	0	0
	20116007	--- ---	压脚组件 (70)	Presser foot form	0	0	1
	20516015	--- ---	压脚组件 (厚料)	Presser foot form	0	0	1
	20116004	--- ---	压脚组件 (倒回缝)	Presser foot form	1	0	0
	20116005	--- ---	压脚组件 (倒回缝)	Presser foot form	0	1	0
30	20312001	KS29	压杆扳手	Presser foot lifting handle	1	1	1
31	20326001	KS30D	压力簧导销	Presser foot lifting anh	1	1	1
32	20312002	KS31E	压脚扳手座	Presser foot lifting handle bracket	1	1	1
33	20103028	KS32	压杆套	Presser bar bushing	1	1	1
34	20327002	KS34	压力簧	Presser foot lifting spring	1	1	1
35	P03028	--- ---	抬压脚扳手销	Pin	1	1	1
36	201S20004	SK296	压脚柄勾螺钉	Set screw	1	1	1
37	201S30020	--- ---	压脚扳手螺钉	Lifting handle screw	1	1	1
38	201S11005	SK221	螺钉	Screw	3	3	3
39	201S12007	SK298	压脚曲柄定位螺钉(766)	Crank set screw	1	1	1
	201S13003	--- ---	压脚曲柄定位螺钉(795/757)	Crank set screw	1	1	1
40	S10005	005292-HV	压脚轴挡圈螺钉	Snap washer screw	3	3	3
41	201S14002	--- ---	螺钉	Screw	1	1	1
42	201S11016	SK257	压脚角板螺钉	Set plate screw	2	2	2
43	S01023	7175	螺钉	Screw	1	1	1
44	206S16005	--- ---	螺母	Nut	1	1	1
45	201S11035	SK408	螺钉	Screw	1	1	1
46	203S30002	SK255	螺钉(757/766)	Screw	1	1	1
47	203S12001	SK331	螺钉(757/766)	Screw	1	1	1
48	201S16003	NK26	螺母(757/766)	Nut	1	1	1



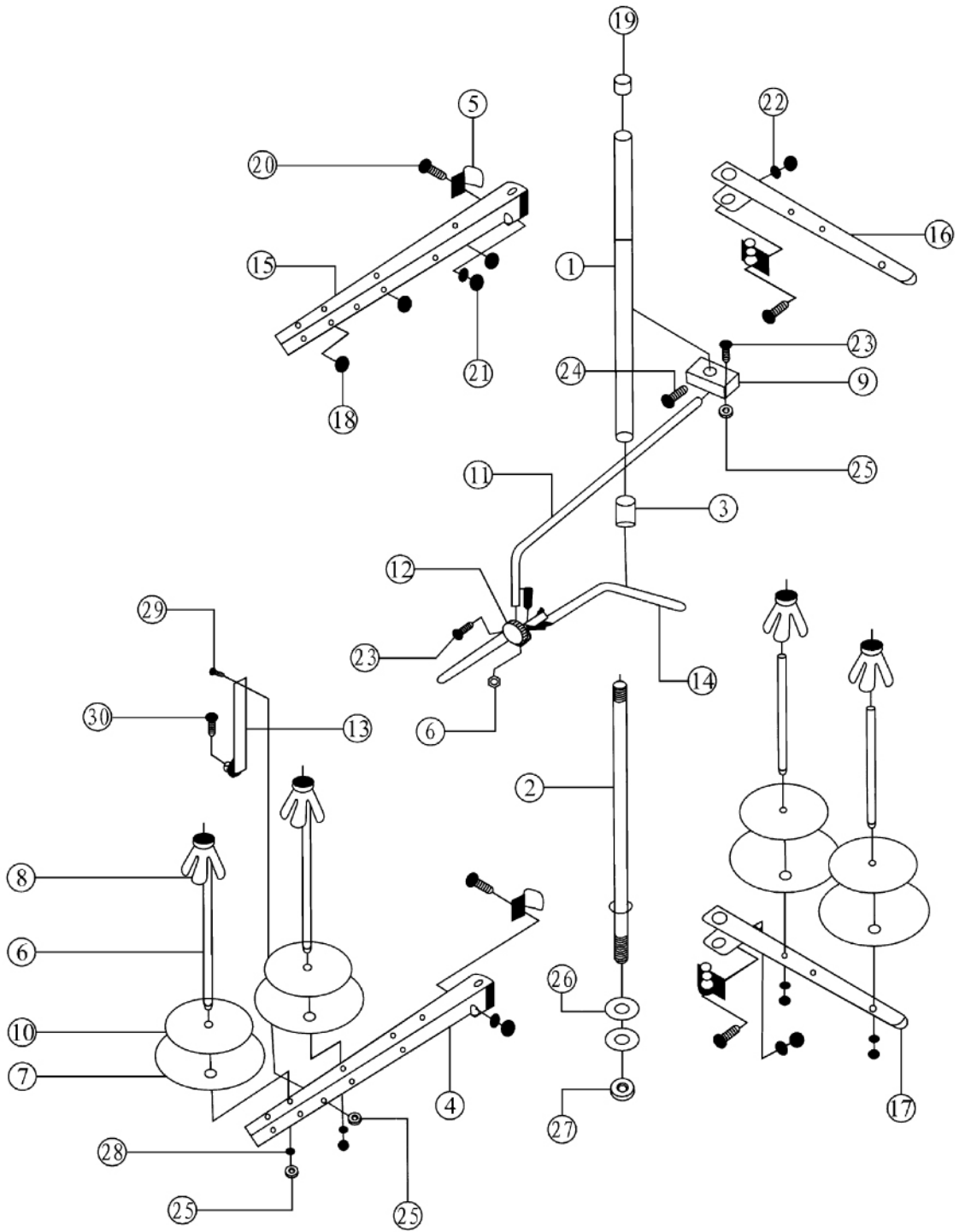
## 十五、润滑部分 Lubrication Assemblies

序号 NO.	件号 Part NO.	参考件号 Ref.Part NO.	名称	Description	数量 (Number)		
					三线	四线	五线
					Three-thread	Four-thread	Five-thread
1	20120001	--- ---	油泵(795)	Oil pump	1	1	1
	20320001	--- ---	油泵(757/766)	Oil pump	1	1	1
2	201S11025	SK278	油泵螺钉	Oil pump screw	2	2	2
3	201S30004	SK304	油管接头I螺钉	Oil tube joint screw	4	4	4
4	209S11019	--- ---	滤油器盖螺钉	Oil screen cover screw	4	4	4
5	201S11019	SK265	油盘磁铁盖螺钉	Oil pan magnet cover screw	1	1	1
6	201S11031	SK310	油盘放油螺钉	Oil pan screw	1	1	1
7	10131001	--- ---	油盘磁铁	Oil pan magnet	1	1	1
8	20112050	KT58	油盘磁铁盖	Oil pan magnet cover	1	1	1
9	20101034	--- ---	滤油器盖	Oil clearer cover	1	1	1
10	20122032	--- ---	滤油器盖纸垫	Oil clearer cover seal ring	1	1	1
11	20136001	KT14-A	滤油器	Oil clearer	1	1	1
12	20136002	--- ---	油管接头I	Oil tube joint I	2	2	2
13	20136003	--- ---	油管接头II	Oil tube joint II	1	1	1
14	20129002	--- ---	油管卡簧	Oil tube shape ring	4	4	4
15	2012100600	--- ---	油管	Oil tube	1	1	1
16	20122034	--- ---	垫片	Washer	3	3	3
17	20136004	--- ---	双头配油器	Double node oil manager	1	1	1
	20121012	--- ---	双头配油器(795L)	Double node oil manager	1	1	1
18	20136005	--- ---	油管接头	Oil tube joint	1	1	1
19	201S30015	--- ---	配油器螺钉	oil manager screw	1	1	1
20	20122033	--- ---	垫片	Washer	4	4	4
21	2012100700	--- ---	油管	Oil tube	1	1	1
22	20121016	KA38	回油管	Oil back tube	1	1	1
23	20111010	--- ---	油标	Oil observer	1	1	1
24	20101035	KT51B	油盘	Oil pan	1	1	1
25	20122035	KT52B	油盘垫圈	Oil pan washer	1	1	1
26	20122036	KT56	堵油垫圈	Oil seal	1	1	1
27	20121013	--- ---	滤油器接头	Oil cljerner joint	1	1	1
28	300077	KT16	滤油器盖	Oil screen cover	1	1	1
29	20322004	KT17	滤油器盖密封圈	Oil clerner cover seal ring	1	1	1
30	20337005	KT18	润滑提示	ingicaing plat	1	1	1
31	2032100400	--- ---	油管	Oil clearer cover	1	1	1
32	20136002	--- ---	油管接头I	Oil tube joint I	1	1	1
33	20136003	--- ---	油管接头II	Oil tube joint II	1	1	1
34	30129003	202199	油管卡簧(小)	Oil tube shap ring	1	1	1
35	20301006	KT38	润滑套	Lubrcate bushing	1	1	1
36	20321002	KT22	上配油器	Upper screem	1	1	1
37	20321003	KT39-2	下配油器	lower screem	1	1	1
38	203S30004	SK286	配油器螺钉	Oil screem screw	1	1	1
39	20311005	KT46E	油量显示座	Oil show bracket	1	1	1
40	20311006	KT47E	油量显示器杆	Oil show cleaner link	1	1	1
41	20312003	KT49D	油量显示器支架	Oil show cleaner guard	1	1	1
42	20311008	KT74	油标刻度板	Oil dial	1	1	1
43	203S30003	SK419	油管接头II螺钉	Screw	1	1	1
44	201S30004	SK304	S063螺钉	Screw	1	1	1
45	201S11019	SK265	S039螺钉	Screw	3	3	3
46	201S11014	SK250	S027螺钉	Screw	2	2	2



## 十六、送布挡料部分 Feed Snap Assemblies

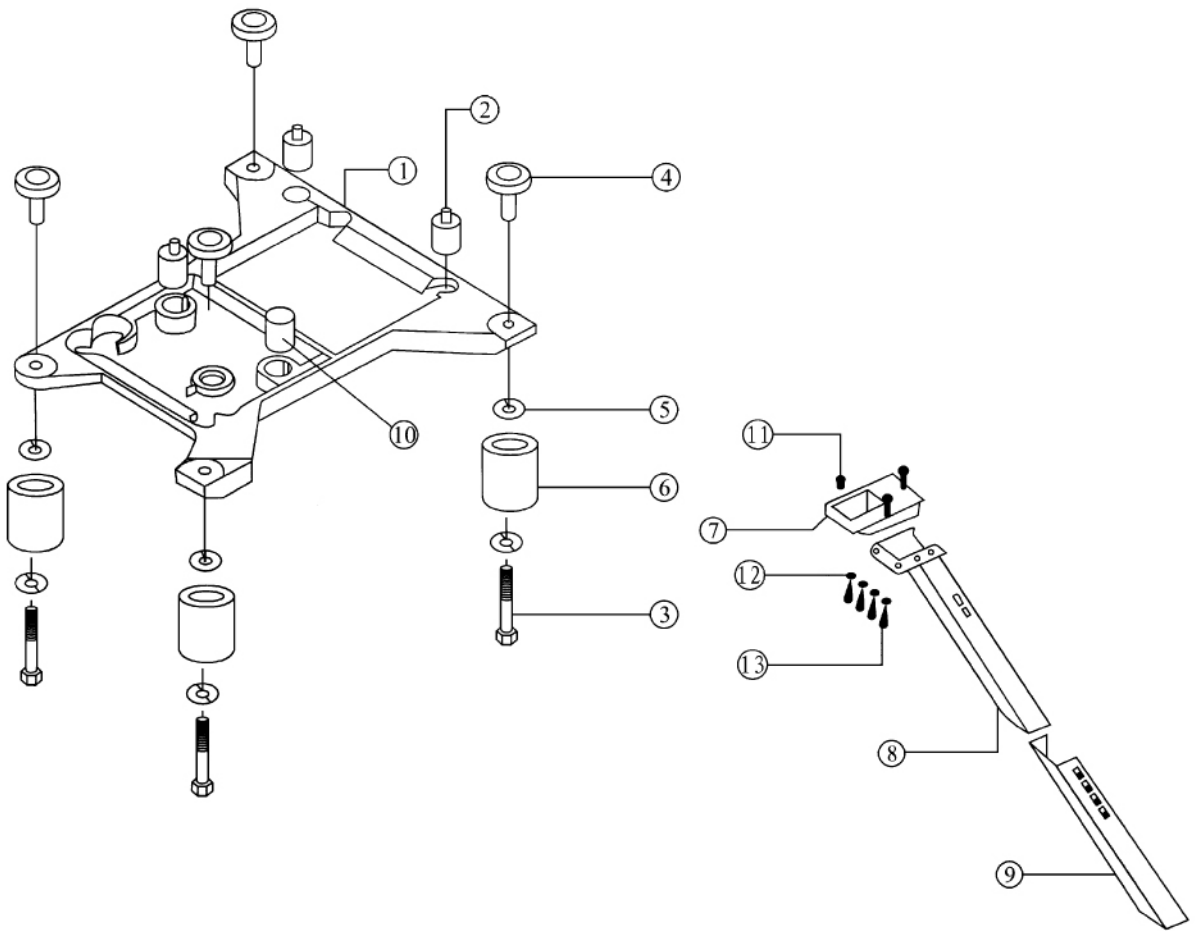
序号 NO.	件号 Part NO.	参考件号 Ref.Part NO.	名称	Description	数量 (Number)		
					三线	四线	五线
					Three-thread	Four-thread	Five-thread
1	20123012	KU02	油堵	Oil seal	1	1	1
2	20101037	KU14	机针冷却器	Needle cooler	1	1	0
	20101038	KU15	机针冷却器	Needle cooler	0	0	1
3	20121019	KU20	油管	Oil tube backer	1	1	1
4	20123021	KU22	硅油冷却油线	Oil wick	1	1	1
5	20111011	KU23-1B	下硅油盒盖	Lower oil box cover	1	1	1
6	20111012	KU23-2B	下硅油盒	Lower oil box	1	1	1
7	20123014	KU24	油棉	Oil felt	1	1	0
	20123015	KU25	油棉	Oil felt	0	0	1
8	20123021	KU26	油线	Oil wick	1	1	1
9	20112051	KU27D	送料支架	Cloth guide holder	1	1	1
10	20112052	KU28D	铰链	Hinge plate	1	1	1
11	20123017	KU29	硅油棉块	Oil felt block	1	1	1
12	20126020	KU34	铰链销	Hinge pin	1	1	1
13	20112053	KU35	铰链弹簧	Hinge spring	1	1	1
14	20112054	KU40	挡料板	Snap plate	1	1	0
	20112055	KU39	挡料板	Snap plate	0	0	1
	20112071	--- ---	挡料板 (倒回缝)	Snap plate	1	1	0
15	20112056	KU43	挡料板座	Snap plate bracket	1	1	1
16	201S11009	SK233	螺钉	Screw	1	1	1
17	20128020	WK09	垫圈	Washer	3	3	3
18	201S11011	SK239	铰链簧螺钉	Hinge spring screw	1	1	1
19	201S12001	SK246N	铰链螺钉	Hinge screw	2	2	2
20	201S16003	NK26	螺母	Nut	1	1	1
21	201S11016	SK277N	送料支架螺钉	Cloth guide holder screw	1	1	1
22	201S11018	SK262	机针冷却器螺钉	Needle cooler screw	3	3	3
23	201S20002	SK266	螺钉	Cloth guide holder screw	1	1	1
24	20128027	KP46	垫圈	Washer	1	1	1
25	20129002	KT26	油管卡簧	Oil tube shape ring	2	2	2





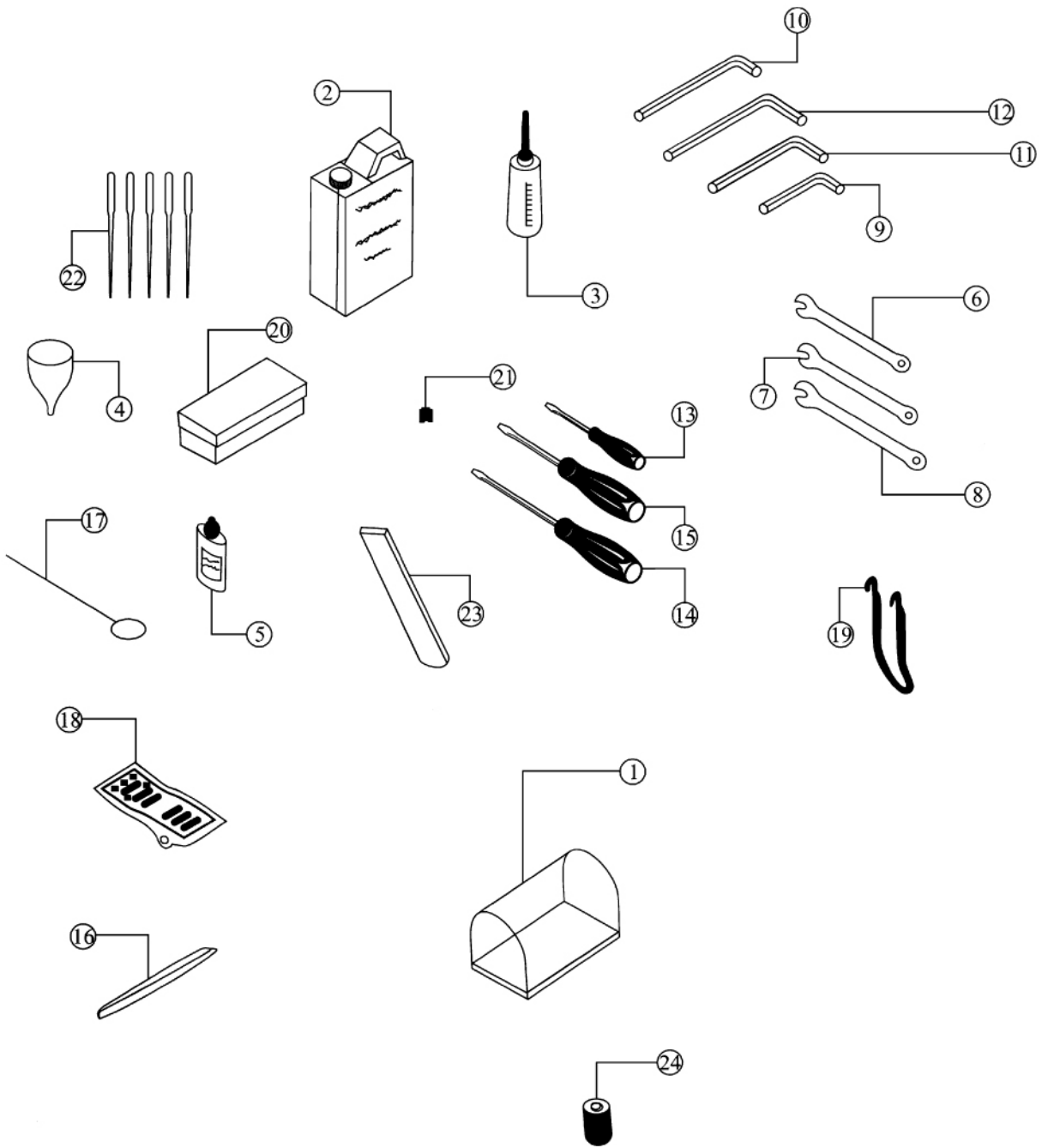
## 十七、线架部分 Thread Spool Assemblies

序号 NO.	件号 Part NO.	参考件号 Ref.Part NO.	名称	Description	数量 (Number)		
					三线	四线	五线
					Three-thread	Four-thread	Five-thread
1	20131001	KW01E	上管	Upper thread column	1	1	1
2	20131002	KW02E	下管	Lower thread column	1	1	1
3	20131003	KW03E	套	Bushing	1	1	1
4	20131004	KW04E	长托线架	Long thread spool troy bracket	1	1	1
5	20131005	KW05E	导线环	Thread guide hook	4	4	4
6	20131006	KW09B	线托棒	Spool pin	3	4	5
7	20131007	KW12E	线盘	Spool tray	3	4	5
8	20131008	KW13E	线圈定位套	Centering device	3	4	5
9	20131009	KW14E	棒架	Clamp plate	1	1	1
10	20131010	KW28E	线盘垫	Spool tray cushioning	3	4	5
11	20131011	KW16	导线棒	Thread guide connecting bar	1	1	1
12	20131012	KW20E	固定器	Thread guide joint	1	1	1
13	20131013	KW22	固定板	Thread stable holder	1	1	1
14	20131014	KW23	导线棒	Thread guide bar	1	1	1
15	20131015	KW26E	大导线架	Thread spool tray bracket	1	1	1
16	20131016	KW28E	过线板	Thread guide plate	1	1	1
17	20131017	KW29E	托线架	Thread spool tray bracket	1	1	1
18	20131018	KW32E	过线环	Thread guide hook	3	3	3
19	20131019	KW3613	棒冒	Rubber seal	1	1	1
20	20131020	SK421	导线环螺钉	Thread guide hook screw	4	4	4
21	201S16006	NK31B	导线环螺母	Thread guide hook nut	4	4	4
22	20128016	SW01	导线环垫圈	Thread guide washer	4	4	4
23	20131021	SK386B	棒架螺钉	Clamp plate screw	3	3	3
24	20131022	SK281B	棒架螺钉	Clamp holder screw	1	1	1
25	201S16004	NK29B	螺母	Nut	8	8	8
26	20128025	KW25B	下管垫圈	Lower washer	2	2	2
27	201S16005	NK30	螺母	Nut	1	1	1
28	20128018	SW04	垫圈	Washer	4	4	4
29	20131023	SK420	固定板螺钉	Thread stand holder screw	1	1	1
30	20131024	SK422	固定板连接螺钉	Thread stand holder join screw	1	1	1



## 十八、托盘、排料部分 Plate Row Material Assemblies

序号 NO.	件号 Part NO.	参考件号 Ref.Part NO.	名称	Description	数量 (Number)		
					三线	四线	五线
					Three-thread	Four-thread	Five-thread
1	20131025	KX01	机架托盘	Machine head plate	1	1	1
2	20131026	KX02	减震垫组件	Head shockproof cushion	3	3	3
3	20131027	KX04	螺钉M8x55	Screw	4	4	4
4	20131028	KX05	托盘螺钉固定头	Screw	4	4	4
5	20131029	KX08	大垫圈	Big washer	12	12	12
6	20131030	KX09	防震套	Plate dog link bushing	12	12	12
7	20131031	KX10E	排料槽座	Row material trollgh bracket	1	1	1
8	20131032	KX12E	排料槽I	Row material trough I	1	1	1
9	20131033	KX13E	排料槽II	Row material trough II	1	1	1
10	20131057	--- ---	托盘防震垫	Washer	1	1	1
11	20131034	SK391	排料槽座螺钉	Row material seat screw	3	3	3
12	20128022	WK21	排料槽垫圈	Row material washer	4	4	4
13	20131035	SK392	排料槽螺钉	Row material screw	4	4	4



## 十九、随机附件部分 Accessories Assemblies

序号 NO.	件号 Part NO.	参考件号 Ref.Part NO.	名称	Description	数量 (Number)		
					三线	四线	五线
					Three-thread	Four-thread	Five-thread
1	20131036	KY01	机罩	Machine head cover	1	1	1
2	20131037	KY02	油壶/1000cc	Oil can/100cc	1	1	1
3	20131038	KY03	注油壶	Notes oil	1	1	1
4	20131039	KY04	漏斗	Tundish	1	1	1
5	20131040	KY05	油壶/50cc	Oil can/50cc	1	1	1
6	20131041	KY07	扳手 (6mm)	Spanner	1	1	1
7	20131042	KY08	扳手 (7mm)	Spanner	1	1	1
8	20131043	KY09	扳手 (8mm)	Spanner	1	1	1
9	20131044	KY10	内六角扳手 (2mm)	Inner-hexagon screw driver	1	1	1
10	20131045	KY11	内六角扳手 (3mm)	Inner-hexagon screw driver	1	1	1
11	20131046	KY12	内六角扳手 (5mm)	Inner-hexagon screw driver	1	1	1
12	20131047	KY13	内六角扳手 (6mm)	Inner-hexagon screw driver	1	1	1
13	20131048	KY14	螺丝刀 (小)	screw driver	1	1	1
14	20131049	KY15	螺丝刀 (中)	screw driver	1	1	1
15	20131050	KY16	螺丝刀 (大)	screw driver	1	1	1
16	20131051	KY18	镊子	Tweezer	1	1	1
17	20131052	KY19	金属线	Metal guide	0	0	1
18	20131053	KY20D	脚踏板	Presser foot base	1	1	1
19	20131054	KY21-A	脚踏板链	Presser foot base chain	1	1	1
20	20131055	KY26	附件盒	Attachment box	1	1	1
21	201S14001	SK216	顶针螺钉	Thumble screw	4	4	4
22	20117001	DCX27	机针	Needle	4	4	4
23	20119002	KR35	下刀	Lower knife	1	1	1
	20119006	--- ---	下刀(厚料)	Lower knife	0	0	1
24	20136001	KT14-A	过滤器	Oil filter	1	1	1

795、757、766系列专用件											
机型	间距		针板	牙齿组件	压脚组件	上弯针	针夹	垫圈	针杆曲柄	下弯针摆动曲柄	机针
	NG	SW									
MACHINE TYPE/SPEC	GAUGE		NEEDLE PLATE	FEED FORM	PRESSER FOOT ASSM.	UPPER LOOPER	NEEDLE CLAMP	WASHER	CRANK	LOWER LOOPER CRANK	NEEDLE
795-3-504M1-15 757/766-3-504M1-15	0	1.5	20115006	2011401800	20116006	20117007	20134002	20128006	20104003	20104009	DC27# 11
795-3-504M2-04 757/766-3-504M2-04	0	4	20115001	2011401700	20116001	20117007	20134002	20128006	20104003	20104009	DC27# 11
795-3-504M5-04/BK 737/766-3-504M5- 04/BK	0	4	20115004	2011402100	20116004	20117007	20134002	20128006	20104003	20104009	DC27# 11
795-3-504M2-04/LFC-2 737/766-3-504M2- 04/LFC-2	0	4	20115001	2011401700	跟松紧带 装置配套	20117007	20134002	20128006	20104003	20104009	DC27# 11
795-4-514M2-24/LFC-2 747/766-4-514M2- 24/LFC-2	2	4	20115002	2011401700	跟松紧带 装置配套	20117007	20134001	20128005	20104002	20104009	DC27# 11
795-4-514M5-23/BK 747/766-4-514M5- 23/BK	2	3	20115005	2011402100	20116005	20117007	20134001	20128005	20104002	20104009	DC27# 11
795-4-514M2-24 757/766-4-514M2-24	2	4	20115002	2011401700	20116002	20117007	20134001	20128005	20104002	20104010	DC27# 11
795-5-516M2-35 757/766-5-516M2-35	3	5	20115003	2011401900	20116003	20117007	20134003	20128005	20104002	20104010	DC27# 14
795-5-516M2-55 757/766-5-516M2-55	5	5	20115008	2011401900	20116007	20117007	20134004	20128005	20104002	20104010	DC27# 14
795-5-516X2-56 757/766-5-516X2-56	5	6	20115007	2011402000	20516015	20117007	20134004	20128005	20104002	20104010	DC27# 19